

INDUSTRIAL SEATING

DELUXE SWIVEL STOOLS

These padded stools will provide workers with maximum comfort and support. The 360° swivel motion is ideal for workers who have repetitive side to side movement. The seat easily adjusts to your selected height. Just raise or lower the steel rod and lock securely in place. All-welded frame is constructed of 1" diameter 16 gauge steel. With a 3/4" circular tube footrest. The four leg cluster design has a 22" spread giving them optimum stability. Black vinyl upholstery with a royal grey frame. Optional casters available.

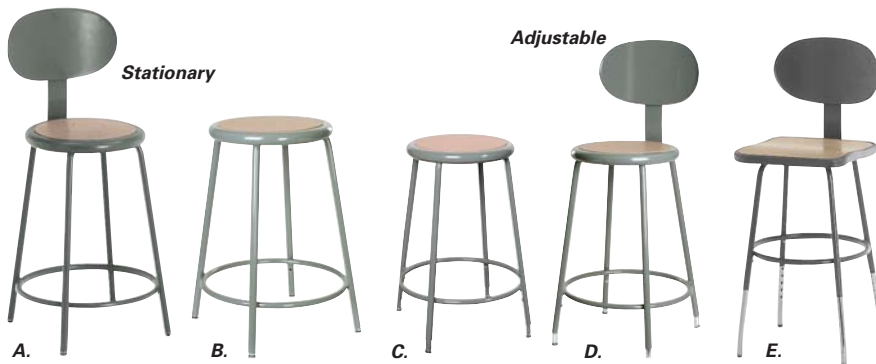
Model **FC668** has a 2" thick foam padded seat over a 5/8" plywood base and a 1" foam backrest.

Model **FC670** has the same 2" foam but over a 1/2" plywood base and 1/2" foamed backrest.



| Model No. | Adjustable Height" | Seat Dimensions" | Wt. lbs. |
|-----------|--------------------|------------------|----------|
| FC668 | 25-31 | 16 x 17 | 33 |
| FC670 | 25-31 | 16 x 17 | 33 |
| FC675 | Set of 4 casters | | 2 |

STATIONARY AND ADJUSTABLE HEIGHT STOOLS



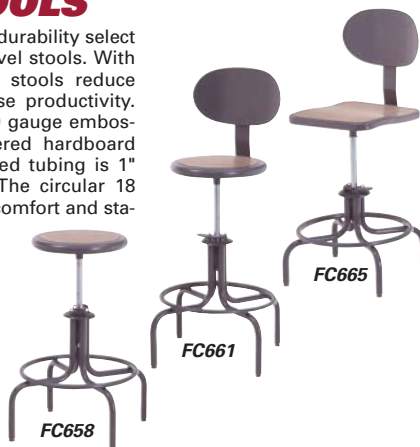
Ruggedly built for long lasting service in a warehouse, factory or office. Your choice of stationary or adjustable stools, with or without backrest. The all-welded frame is a 7/8" diameter steel tube. The legs are braced with a 3/4" 18 gauge circular footrest for increased strength and stability. The 14" diameter embossed steel seat has a 1/8" tempered hardboard inlay. The Model **FC656** has a 14 1/2" x 15" sq. seat and is reinforced by steel bars.

SWIVEL STOOLS

For efficiency, comfort and durability select one of our economical swivel stools. With or without backrest these stools reduce worker fatigue and increase productivity. The seats are made of a 19 gauge embossed steel with 1/8" tempered hardboard inlay. The frame's all-welded tubing is 1" diameter 16 gauge steel. The circular 18 gauge footrest guarantees comfort and stability. Heavy-duty rubber cushioned steel glides protect floors. All units have a 1" x 14 1/2" long steel adjustment stem for easy height selection.

The backrest is 9 1/2" x 15 3/4" and is 4 way adjustable.

Optional casters available.



| Model No. | Adjustable Height" | Seat Dimensions" | Wt. lbs. |
|-----------|--------------------|------------------|----------|
| FC658 | 22-28 | 14 | 19 |
| FC661 | 22-28 | 14 | 28 |
| FC665 | 17-23 | 14 1/2 x 15 | 27 |
| FC675 | Set of 4 casters | | 2 |

SPECIALTY STOOLS

Designed specifically for laboratories, medical offices and clean rooms. These stools are available with 14" diameter 3" high vinyl covered seat, pneumatic mechanism to adjust the height, and available with casters or glides. A full foot ring is standard on stools with a 23" - 33" adjustable height, optional on the other stools.

| Model No. | Fabric | Adjustable Height" | Wt. lbs. |
|----------------|--------|--------------------|----------|
| CASTERS | | | |
| OC785 | OC791 | 16 - 22 | 14 |
| OC786 | OC792 | 21 - 28 | 18 |
| OC787 | OC793 | 23 - 33 | 2 |
| GLIDES | | | |
| OC788 | - | 16 - 22 | 14 |
| OC789 | - | 21 - 28 | 18 |
| OC790 | OC796 | 23 - 33 | 20 |

Model No. **OC819** (optional footring)
for heights 16"-22" and 21"-28" only



BIRCH STOOLS

Can be used for applications where the use of metal is not recommended. 100% all wood natural finish. Available in 2 heights.

| Model No. | Height" | Wt. lbs. |
|-----------|---------|----------|
| OC859 | 18 | 11 |
| OC860 | 24 | 13 |



The contoured back rest is constructed of 19 gauge steel. On the adjustable models the telescopic legs have screw locks that adjust on 1" increments.

All stools have four chrome floor glides that won't damage floors.

Colour is royal grey.

STATIONARY HEIGHT

| Model No. | Height" | Seat Dimensions" | Wt. lbs. |
|-----------|---------|------------------|----------|
| A. FC649 | 24 | 14 | 20 |
| B. FC647 | 24 | 14 | 12 |
| B. FC648 | 30 | 14 | 14 |

ADJUSTABLE HEIGHT

| Model No. | Height" | Seat Dimensions" | Wt. lbs. |
|-----------|---------|------------------|----------|
| C. FC653 | 25-33 | 14 | 12 |
| D. FC655 | 25-33 | 14 | 20 |
| E. FC656 | 18-26 | 14 1/2 x 15 | 18 |

POLYURETHANE SEAT STOOLS

- Maximum comfort, durable economical stools with self-skinned polyurethane padded seat
- Easy to maintain in any environment
- 14" diameter seats mount to stationary, adjustable or swivel stools of various heights for your convenience
- Sit/stand seat options (**OG389**, **OG390**) offer an ergonomic moulded polyurethane seat, mounted on a sturdy 4-leg steel base



| Model No. | Description | Adjustable Height" | Seat Dimensions" |
|-----------|-----------------------|--------------------|------------------|
| OG385 | Fixed Seat | 18 - 26 | 13-1/2 x 1-1/2 |
| OG386 | Fixed Seat | 25 - 33 | 13-1/2 x 1-1/2 |
| OG387 | Swivel Seat | 22 - 28 | 13-1/2 x 1-1/2 |
| OG388 | Swivel Seat | 27 - 33 | 13-1/2 x 1-1/2 |
| OG389 | Shaped Sit/Stand Seat | 18 - 26 | 13 x 9 x 2 |
| OG390 | Shaped Sit/Stand Seat | 25 - 33 | 13 x 9 x 2 |

INDUSTRIAL SEATING

INDUSTRIAL SEATING

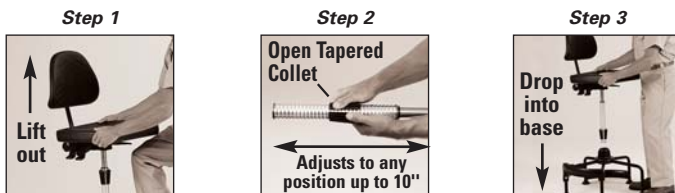
The high range series of industrial seating features a full 8" of pneumatic lift while seated. Exclusive new extension tube provides an adjustable height range of 17" to 35". Seats and backs are microcellular self skinning polyurethane foam which inhibits punctures, tears and moisture absorption. Large 26" diameter 5 leg steel base with 2 1/2" diameter glides ensure stability and safety even at the highest levels. Large wide angle footrests make it easy to step up into seat.



FC680
Features 22° back angle and 10° seat tilt adjustment w/double paddle handles.

FC681
Features 3" back rest height and 3" back rest depth adjustment. Assembly required.

HOW WAVE TUBE TECHNOLOGY WORKS



| Model No. | Dimensions" | | |
|-----------|-----------------|------------|-----------|
| | Seat | Backrest | Footrests |
| FC680 | 18 1/2 x 17 | 15 3/4 x 9 | 3 |
| FC681 | 16 1/4 x 16 1/4 | 14 1/2 x 9 | 1 |

STAG 4 ERGONOMIC SUPPORT STOOL

- Promotes efficient work over prolonged periods without any discomfort
- Enables users to adopt three positions suitable for all work on or low to the ground (from 0' to 5')
- Optional rear and front tool trays also available

| Model No. | Colour |
|-----------|------------------|
| OG347 | Brown/Beige |
| OG348 | Red/Grey |
| OG349 | Navy Blue/Yellow |



ERGONOMIC SEATING

Designed specifically for the industrial work place, food industry, or any application. It provides workers with dynamic seating necessary for the maintenance of health and productivity.

The ergo stool offers a black self-skinned integral moulded polyurethane foam seat and back for durability and ease of maintenance. The stool features proper lumbar support, swivel and water-fall seat and three pneumatic height adjustments.

| Model No. | Description | Adjustable Height" |
|-----------|-------------|--------------------|
| FC677 | No footring | 16 - 22 |
| FC678 | Footring | 20 - 29 |
| FC679 | Footring | 23 - 33 |

W/ GLIDES

| | | |
|-------|-------------|---------|
| OD513 | No footring | 16 - 22 |
| OD514 | Footring | 20 - 29 |
| OD515 | Footring | 23 - 33 |



FC677

OD514

SHOPTECH ERGONOMIC INDUSTRIAL STOOLS

Industrial seating that brings ergonomic comfort and productivity to the shop floor, the laboratory or the shipping office. Durable, easy to clean, moulded polyurethane seating is the perfect solution for clean rooms or wipe down applications.

Model **OE088** has an overall height of 16-21" with a 19" wide by 14" deep seat.

Model **OE089** Sit/stand stool has an overall height of 26-36", seat is 13.5" W x 9.5" D with a 5" H x 6" W back.

| Model No. | Description | Wt. lbs. |
|-----------|-------------|----------|
| OE088 | Stool | 20 |
| OE089 | Sit/stand | 19 |



OE088

OE089

SIT/STAND STOOLS

Sit/stand stools dramatically reduce fatigue for workers unable to sit down on the job. Can be positioned for up close work.

Model **FC683** heavy gauge triangular glides provide safety, features a built-in footrest, a 15" wide x 13 7/8" high self skinning polyurethane seat mounted to an adjustable spring suspension frame that automatically tilts forward up to 15° while in use. Removable seat attaches to frame with a double pin locking system which easily adjusts to 12 positions from 21" to 35".

Model **FC685** features a sturdy, tip proof 5 leg base with a padded comfortable "Bicycle style" seat. Pneumatic height adjustment from 23 1/2" to 33 1/2".

Model No. **FC683** Manual Adjustment

Model No. **FC685** Pneumatic Adjustment



FC683

FC685

FOOTREST

Fixed at a comfortable 8 degree angle to relieve muscle strain. Removable 14 gauge platform has nine elevation positions which lock into place with a double locking pin. Finished with a black powder coat paint and textured anti-slip covering on the platform. 20" W x 13" D x 21" H.

Model No. **FC684**



ERGONOMIC INDUSTRIAL SHOP SEATING

These industrial chairs feature, comfortable and supportive seating that is easy to clean. The seats are made of a soft moulded polyurethane material and the backs are formed to support the body for greater comfort and less fatigue. Pneumatic height adjustment of 15" to 20.5". Adjustable back rest. 5-prong poly on steel base with dual wheel carpet casters. Optional chrome foot ring adds 10" to height. Glides recommended with footring.

Model **OC816** and **OC821** task chairs have adjustable backrest height, depth and angle.

Optional stool kit Model **OC822**.

| Model No. | Description | Wt. lbs. |
|-----------|------------------------------|----------|
| OC815 | Operator's Chair | 25 |
| OC816 | Task Chair | 26.5 |
| NH450 | Operator's Chair w/stool kit | 30 |
| NH451 | Task Chair w/stool kit | 31.5 |

W/GLIDES

| | | |
|-------|------------------------------|------|
| OC820 | Operator's Chair | 25 |
| OC821 | Task Chair | 26.5 |
| NH452 | Operator's Chair w/stool kit | 30 |
| NH453 | Task Chair w/stool kit | 31.5 |



OC815

OC816

INDUSTRIAL & CLUSTERS SEATING

STENO CHAIR

A heavy duty industrial chair at an economical price. Comfortable 2 1/2" foam upholstered seat with a full 360° rotation. The padded backrest has a floating spring action back hinge. Standard black vinyl upholstery. A five prong base for increased stability. Height adjustment from 17" to 22". Included, five swivel black nylon, twin wheel casters.

Model No. OA276



ECONOMY DRAFTING CHAIR

- Pneumatic seat height control adjust from 24" to 31"
- Manual back height and depth adjustment
- Chrome-plated adjustable footring
- Five star nylon-reinforced base for strength and durability
- Back dimensions: 16" W x 9.5" H
- Seat dimensions: 18 3/4" W x 16 5/8" D



| Model No. | Colour | Wt. lbs. |
|-----------|-----------|----------|
| OE096 | Black | 25 |
| OE097 | Dark Grey | 25 |

STATIC-CONTROL ERGONOMIC TASK STOOLS

For use in computer rooms, assembly areas, and other ESD situations. Engineered with all-metal frames and components to achieve superior drain rate and to minimize static charge generation. Height adjusted with *Soft Touch* pneumatic mechanism. Upholstered waterfall seats are 18 1/2" W x 17" D x 3" thick and swivel 360 degrees.



14 1/2" W x 9 1/2" H backrest easily adjusts for height and depth and includes a protective, injection-moulded rear back panel. Comes with chrome-plated steel glides. Optional non-marring, conductive ESD casters add 2" to seat height. Available in a blue vinyl or blue cloth upholstery.

| Model No. | Adjustable Seat Height" | Wt. lbs. |
|--------------|-------------------------|------------------|
| Vinyl | Cloth | |
| OC758 | OC761 | 17-22 1/4 30 |
| OC759 | OC762 | 20 1/4-25 1/2 30 |
| OC760 | OC763 | 24 1/4-29 1/2 31 |
| OC764 | ESD Casters, set of 5 3 | |

WITH CASTERS

| | | | |
|-------|-------|---------------|----|
| OD518 | OD536 | 17-22 1/4 | 33 |
| OD522 | OD537 | 20 1/4-25 1/2 | 33 |
| OD523 | OD538 | 24 1/4-29 1/2 | 34 |

PNEUMATIC SWIVEL STOOLS

Model OD846

- 5" gas lift
- Height adj. 18" to 23"
- Black select fabric
- Weight: 10 lbs/2 cu. ft.



Model OD847

- 10" gas lift
- Height adj. 23" to 33"
- Options ST-03 stool kit (OC822)
- Weight: 12 lbs/2 cu. ft.

SCOOTER STOOL

All steel construction and soft rubber casters with ball bearing movement allow the Scooter Stool to give rugged and versatile service. Features a tray shelf for tools or papers and a 300 lbs. download capacity. Shipped knocked down. Ten year warranty.



| Model No. | Tray Diameter" | Seat Diameter" | Height" | Wt. lbs. |
|-----------|----------------|----------------|---------|----------|
| OE488 | 15 | 13 | 14.5 | 10 |

CLUSTER SEATING

- Perfect lunchroom or cafeteria seating
- Heavy duty 2" black steel tube frame
- Standard 1 1/8" walnut top
- Other table top colours available
- All tops are 24" wide, except for the round top models
- Two chair styles: the polypropylene DS or the padded vinyl DC series
- Available in seven colours

CHOOSE THE CLUSTER ARRANGEMENT THAT MAXIMIZES YOUR SPACE!



Style DS



Style DC



STANDARD WALNUT TOP

Other table top colours available upon request.

| Description | O.A. Dimensions | | | Wt. lbs. | Model No.'s | | | Hunter Green | Brown | Black | Taupe | | |
|-----------------------|-----------------|---|----|----------|-------------|----------|-------|--------------|-------|-------|-------|-------|-------|
| | W" x L" x H" | | | | Blue | Burgandy | Grey | | | | | | |
| STYLE DS | | | | | | | | | | | | | |
| Two Seat Wall Unit | 24 | x | 60 | x | 29 | 55 | OD217 | OD224 | OD231 | OD238 | OA827 | OA826 | OA825 |
| Four Seat Floor Unit | 24 | x | 48 | x | 29 | 108 | OD218 | OD225 | OD232 | OD239 | OA705 | OA707 | OA709 |
| Four Seat Round Unit | 66 Round x 29 | | | | 108 | OD219 | OD226 | OD233 | OD240 | OA772 | OA770 | OA768 | |
| Four Seat Double Top | 50 | x | 60 | x | 29 | 108 | OD220 | OD227 | OD234 | OD241 | OA700 | OA696 | OA782 |
| Six Seat Floor Unit | 76 | x | 60 | x | 29 | 158 | OD221 | OD228 | OD235 | OD242 | OA746 | OA748 | OA750 |
| Six Seat Round Unit | 80 Round x 29 | | | | 170 | OD222 | OD229 | OD236 | OD243 | OA732 | OA734 | OA736 | |
| Eight Seat Floor Unit | 104 | x | 60 | x | 29 | 170 | OD223 | OD230 | OA830 | OD244 | OA772 | OA770 | OA778 |
| STYLE DC | | | | | | | | | | | | | |
| Two Seat Wall Unit | 24 | x | 60 | x | 29 | 65 | OD245 | OD246 | OA733 | OD247 | OA729 | OA725 | OA823 |
| Four Seat Floor Unit | 24 | x | 48 | x | 29 | 130 | OD248 | OD249 | OA749 | OD250 | OA745 | OA741 | OA739 |
| Four Seat Round Unit | 66 Round x 29 | | | | 130 | OD251 | OD252 | OA781 | OD253 | OA777 | OA773 | OA771 | |
| Four Seat Double Top | 50 | x | 60 | x | 29 | 130 | OA759 | OD255 | OA765 | OD256 | OA761 | OA757 | OA755 |
| Six Seat Floor Unit | 76 | x | 60 | x | 29 | 195 | OD257 | OD258 | OA798 | OD259 | OA796 | OA794 | OA793 |
| Six Seat Round Unit | 80 Round x 29 | | | | 195 | OD260 | OD261 | OA806 | OD262 | OA804 | OA802 | OA801 | |
| Eight Seat Floor Unit | 104 | x | 60 | x | 29 | 170 | OD263 | OD264 | OA814 | OD265 | OA812 | OA810 | OA809 |



OFFICE SEATING

1405 & 1410 PREMIUM SERIES CHAIRS

The new *Premium Series* offers all you require in a task and operator chair. From moulded foam cushions to "one touch" ergonomic chair controls.

- Gas lift height adjustment
- Back height and depth adjustment
- Seat and back angle adjustment on 1410 Series
- Optional arms and stool kit available
- Dual wheel carpet casters

| Model No. | | Description | Seat Dimensions | | | Back Dimensions | |
|-----------|-------|------------------------------|-----------------|--------|-------------|-----------------|------|
| Black | Grey | | W" | D" | H" | W" | H" |
| OE744 | OE745 | 1405 Series chair | 17 1/2 | x 18 | x 17-22 1/2 | 16 1/4 | x 14 |
| OE746 | OE747 | 1405 Series w/stool kit | 17 1/2 | x 18 | x 17-22 1/2 | 16 1/4 | x 14 |
| OE748 | OE749 | 1410 Series multi functional | 17 1/2 | x 18.5 | x 18-23 1/4 | 17 1/2 | x 15 |



OE744



OE748
w/option
OC323

TASK CHAIRS & ECONOMICAL STENO CHAIRS

- Pneumatic height adjustments
- Backrest height adjustments
- Five prong poly on steel base
- Dual wheel carpet casters
- Stool kit available
- Optional arms
- Optional glides (recommended with stool kit)

| Model No. | | Description | Seat Dimensions | | | Back Dimensions | | Wt. lbs. |
|-----------|-------|-------------|-----------------|----|----|-----------------|----|-------------|
| Grey | Black | | W" | D" | H" | W" | H" | |

ECONOMICAL STENO CHAIRS

| | | | | | | | | |
|-------|-------|--------------|----|------|---------|--------|----------|----|
| OC309 | OC310 | w/o arms | 18 | x 17 | x 17-22 | 16 1/2 | x 11 1/2 | 30 |
| OC311 | OC312 | w/fixed arms | 18 | x 17 | x 17-22 | 16 1/2 | x 11 1/2 | 32 |
| OE092 | OE093 | w/stool kit | 18 | x 17 | x 22-27 | 16 1/2 | x 11 1/2 | 35 |

TASK CHAIRS

| | | | | | | | | |
|-------|-------|-------------|----|------|---------|--------|----------|----|
| OE094 | OE095 | w/stool kit | 18 | x 17 | x 22-27 | 16 1/2 | x 13 1/2 | 35 |
|-------|-------|-------------|----|------|---------|--------|----------|----|



OC311
w/stool kit
(OA269)



OE095

OPTIONS FOR CHAIRS

Model No. OA271
Loop Arm Kit
(width adjustable)



Model No. OD848
Fixed Arms



Model No. OC323
T-Arm Kit (width &
height adjustable)



Model No. OA269
Stool Kit



Model No. OC822
Chrome Foot Ring



EXECUTIVE CHAIRS

An elegant and durable line of office chairs. The hi-back and mid-back swivel chairs are manufactured with a five star steel base for strength and stability. Black epoxy frame with a moulded fabric protection on seat and back edges for longer fabric life. Thick contoured seat and back with lumbar supports and padded armrests. Swivel tilt with locking mechanism. The pneumatic lift adjusts from a height of 18" to 22". The guest chair is an excellent addition for any office. It has the same excellent construction on an epoxy coated steel sled base. Hi-back and low-back shown with dual wheel carpet casters.

| Model No. | | Description | Wt. lbs. |
|-----------|-------|--------------------------|-------------|
| Grey | Black | | |
| OC683 | OC684 | Hi-back executive chair | 50 |
| OC685 | OC686 | Low-back executive chair | 46 |
| OC687 | OC688 | Guest side chair | 41 |

Side Chair



Low-Back



Hi-Back



OFFICE SEATING

HIGH & MID-BACK SWIVEL TILTER

- Manual height adjustment
- Contoured seat & back
- Polystyrene arm caps
- Side chair has round tube frame w/sled base
- Manual or gas tension lifter

| Model No. | | Description | Seat Dim. | | | Back Dim. | | Wt. lbs. |
|-----------|-------|-----------------------|-----------|------|---------|-----------|------|----------|
| Grey | Black | | W" | x D | x H" | W" | x H" | |
| OE098 | OE099 | Mid-back/Manual tilt | 21 | x 19 | x 18-22 | 21 | x 19 | 29 |
| OE100 | OE101 | Mid back/Gas tilt | 21 | x 19 | x 18-22 | 21 | x 19 | 29 |
| OE102 | OE103 | High back/Manual tilt | 21 | x 19 | x 18-22 | 21 | x 21 | 30 |
| OE104 | OE105 | High back/Gas tilt | 21 | x 19 | x 18-22 | 21 | x 21 | 30 |
| OE106 | OE107 | Side chair | 21 | x 19 | x 18 | 21 | x 19 | 22 |



Hi-Back



Side

SUPPORTECH ERGONOMIC CHAIRS

- Multi-tilt control for custom adjustment
- Gas lift height adjustment
- Tension adjustable swivel/tilt w/locking free float
- Height adjustable contoured backrest
- Shown with optional height adjustable armrests
- 5 prong plastic (glass reinforced) base
- Dual wheel carpet casters
- Seat dimensions: 20" W x 18 1/2" D x 19-24" H
- Back dimensions: 19" W x 21" H



| Model No. | | | |
|-----------|---------------|----------|-------|
| Black | Grey | Burgundy | Blue |
| OC359 | OC360 | OD839 | OD840 |
| OE639 | Optional arms | | |

DRAFTING STOOLS

- Designed with a contoured seat and back
- 3-way back adjustment provides user comfort
- Seat and back are made with a solid 3/4" plywood frame and fastened together with T nuts
- Standard 100% polypropylene black fabric upholstery
- One piece durable plastic base with chrome footrest
- Two pneumatic gas levers simplifies height adjustment from 24 1/2" to 30" and ergonomic tilt
- With casters

Model No. OA286



PREMIUM SERIES MULTI-FUNCTION OPERATOR CHAIRS

- New concept fabric design
- Heavy-duty multi-tilt mechanism with tension adjustable infinite lock tilt
- Forward tilt with lockout option
- Independent back angle adjustment
- Ratchet backrest height adjustment
- Heavy-duty steel base with plastic cover
- Injection moulded foam cushions
- Dual wheel carpet casters
- Pneumatic gas lift height adjustment: 18"- 23"
- Seat dimensions: 18" W x 18" D x 18-23" H
- Back dimensions: 17" W x 21" H



w/adjustable T-arms

Standard

w/loop arms

| Model No. | | | | |
|-----------|-------|----------|-------|----------------------------|
| Grey | Black | Burgundy | Blue | Description |
| OF194 | OF195 | OF193 | OF192 | Operator chair |
| OF190 | OF191 | OF189 | OF188 | Operator chair w/T-arms |
| OF182 | OF183 | OF181 | OF180 | Operator chair w/loop-arms |

MULTI-TILT EXECUTIVE HIGH BACK

- Pneumatic height adjustment
- Tension adjustable infinite tilt-lock
- Independent back angle and backrest height adjustment
- Contoured moulded foam
- Available as standard or with VISCO Elastic "Memory" foam seat
- Shown with optional arms
- Dual wheel carpet casters
- Seat dimensions: 20" x 19.5" x 18" - 22"
- Back dimensions: 19" x 29"
- Weight: 38 lbs./9.5 cu. ft.



XTC.™ FOLDING CHAIR

- A folding and nesting chair that can be used anywhere additional seating is required
- These chairs nest for easy transport on swivel casters
- The back is contoured and ventilated; the seat is contoured for form fitting comfort
- Features chrome legs and four swivel casters
- Available in black



| Model No. | Description | Seat Dim. | | | Back Dim. | |
|-----------|---------------------|-----------|----------|------|-----------|---------|
| | | W | x D | x H" | W" | x H" |
| OG353 | Xtc.™ Folding chair | 17 3/4 | x 17-3/4 | x 18 | 19 1/4 | x 8 1/2 |

| Model No. | | | |
|---------------------------|------------|----------|-------|
| Grey | Black | Burgundy | Blue |
| OE109 | OC108 | OE110 | OE111 |
| W/VISCO ELASTIC FOAM SEAT | | | |
| OD843 | OD842 | OD844 | OD845 |
| OPTIONAL ARMS | | | |
| OE112 | Adjustable | | |

FOLDING CHAIRS

- Heavy-duty and lightweight tubular steel construction
- Folds flat to 2 3/4" thick and nests for convenient storage
- Double welded rear leg brace
- Exclusive hinge sets legs at wide angle for improved stability and support
- Comfortable extra wide 16" seat and back rest



| Model No. | | | | |
|-----------|-------|-------|----------|-------|
| Grey | Green | Black | Chestnut | Beige |
| OA273 | OD915 | OD916 | OD917 | OD918 |

CHAIRS & CADDIES

STACKING CHAIRS

POLYPROPYLENE CHAIRS

These chairs stack easily. Made of one piece moulded polypropylene shell and sturdy chrome frame. Armchair has wood armrests in a walnut finish. Available in 6 standard colours.



| | | Model No. | | | | Description |
|-------|-------|-----------|-------|-------|-------|---------------------|
| Black | Blue | Beige | Brown | Green | Grey | |
| OA275 | OA279 | OA285 | OA268 | OD215 | OA272 | Stack chair no arms |

UPHOLSTERED CHAIRS

These chairs are easy to stack for compact storage. Vinyl covering over a chrome frame protects against water and mildew.

Armchair includes black plastic rests.



| | | Model No. | | | | Description |
|-------|-------|-----------|-------|-------|--|--------------------------|
| Black | Blue | Beige | Brown | Red | | |
| OA278 | OA886 | OA833 | OA832 | OA842 | | Stacking chairs, no arms |
| OA274 | OA852 | OA848 | OA856 | | | Stacking chairs, w/arms |

BIRCH PLYWOOD STACKING

These chairs are assembled to a beige enamel steel frame. Seat and back are 1/4" thick overall. The most economical chair available.

Model No. OA282

STACKING CHAIRS

This lightweight chair weighing only seven pounds is surprisingly strong. The 7/8" tubular steel frame is of X underseat construction giving rigidity and strength to the unit. The moulded polypropylene seat and back is of high strength polymer with a texture finish. Glides are insert type and will not mark floors. This chair will stack with all plywood stacking chairs. 18" seat height. Colours: Frame is beige; Seat and back: Grey or navy.

Model No. OD919, Navy

Model No. OD920, Grey



HORIZON CHAIRS

They have an incredibly strong and durable thermoplastic shell which assures correct posture and provides maximum comfort for sustained periods of sitting. An arched back with sculptured cutout provides excellent ventilation. The four vibrant shell colours are black, blue, green and grey. Frame is black. The heavy duty welded, unitized chassis has been designed to enable stacking yet avoids protruding legs. Legs are of 16 gauge tubular steel. Heavy 14 gauge channel crossbraces provide anchor points for the shell.



| | | Model No. | | | |
|-------|-------|-----------|------------|---------|--|
| Blue | Grey | Black | Seat Green | Height" | |
| OD925 | OD929 | OD933 | OD937 | 18 | |

HANGING CHAIR CADDY

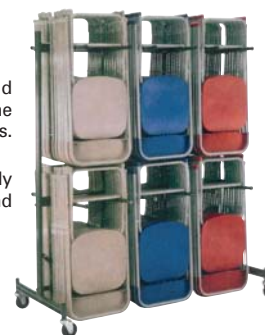
This unique double tier design caddy can hold up to 84 chairs while occupying only half the floor space of other conventional models. Ideal in applications where space is limited.

Portable and easy to manoeuvre yet sturdy with a 14 gauge steel frame construction and 16 gauge rungs.

Overall dimensions: 64" L x 30" W x 74" H.

Shipping Weight: 95 lbs.

Model No. OG343



PLASTIC SEAT SWIVEL STOOL

- Made of 1" diameter 16 gauge tubular steel base
- Sturdy plastic seat
- Seat is manually adjustable from 22" to 28" high; just raise or lower the steel rod and lock securely in place
- 360° swivel
- Colour: black seat with grey epoxy base

Model No. OA241



TABLES, CADDIES & ACCESSORIES

WORK TABLES

Walnut finish laminated top with 1 1/4" square chrome legs. A 1 1/8" metal skirt is all around for stability. Overall height 30".

| Model No. | Top Size W" x L" | Wt. lbs. |
|-----------|------------------|----------|
| OA928 | 24 x 60 | 80 |
| OA307 | 30 x 48 | 52 |
| OA308 | 30 x 60 | 64 |
| OA941 | 30 x 72 | 76 |
| OA926 | 36 x 72 | 90 |
| OA934 | 36 x 96 | 122 |



OA928

STACKING TABLES

- Popular and versatile stacking table
- Lightweight yet rugged construction makes for easy handling
- Require a minimum amount of space when not in use, due to stacking ability
- Overall height: 30"
- 3/8" thick tops, join flush for conferences or banquets
- Sturdy 16 gauge 1" diameter steel frames electrically welded and finished in brown baked enamel paint
- Plastic feet and bumpers won't mark floors

LAMINATED MAHOGONY PLASTIC

| Model No. | Top Size W" x L" |
|-----------|------------------|
| OA919 | 30 x 30 |
| OA925 | 30 x 48 |
| OA917 | 30 x 60 |



OA925

FOLDING TABLES

- 5/8" thick tops
- Durable walnut colour plastic laminate finish
- Folding legs and perimeter metal frame constructed of 16 gauge brown enamel steel
- Table height: 29"

| Model No. | Top Size W" x L" |
|-----------|------------------|
| OA306 | 30 x 60 |
| OA305 | 30 x 72 |
| OA302 | 30 x 96 |
| OA948 | 36 x 72 |
| OA946 | 36 x 96 |
| OA304 | 60" Diameter |



OA306



OA304

EDGE STACKING CADDIES

For rectangular or round tables these caddies are good for tables of all widths especially those wider than 30" that must fit through a narrow doorway. 14 gauge steel tubing with a black finish. Shipping weight: 65 lbs.

| Model No. | Used with | Dimensions L" x W" x H" | Table Capacity |
|-----------|-------------|-------------------------|----------------|
| OG339 | Rectangular | 49 x 31 1/4 x 32 1/4 | 10 |
| OG340 | Round | 49 x 31 1/4 x 41 1/4 | 8 |



OG339



OG340

FLAT STACKING CADDIES

Can stack a capacity of 10-12 tables. It speeds up and eases set-up or storage of all sizes and types of folding tables. Choose the 72" or 96" long caddy with 4" diameter swivel casters.

Model No. OG342

74" L x 31 1/4" W x 36 1/4" H. Wt.: 67 lbs.

Model No. OG341

97 1/2" L x 31 1/4" W x 36 1/4" H. Wt.: 78 lbs.

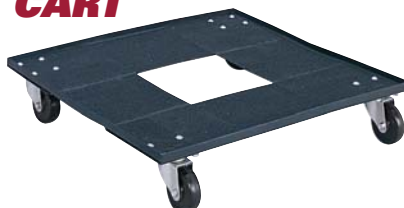


OG342

STACKING CHAIR CART

- Easily transports up to 15 stacked chairs
- 3" casters for easy mobility
- Black powder coat finish

| Model No. | Dimensions W" x D" x H" | Wt. lbs. |
|-----------|-------------------------|----------|
| OE636 | 23 1/8 x 23 1/8 x 4 1/2 | 13 |



19999E

TABLE MOVER™

MAKES TABLE MOVING A ONE PERSON JOB!

Easily transports folding tables by supporting one end in its cradle between two wheels. The opposite end of the table is held and steered by the user.

Accommodates folding tables up to 12' long and 4' wide with table tops up to 7/8" thick. Non scuffing wheels are safe for all surfaces. Symmetric design allows tables to be loaded in either direction.

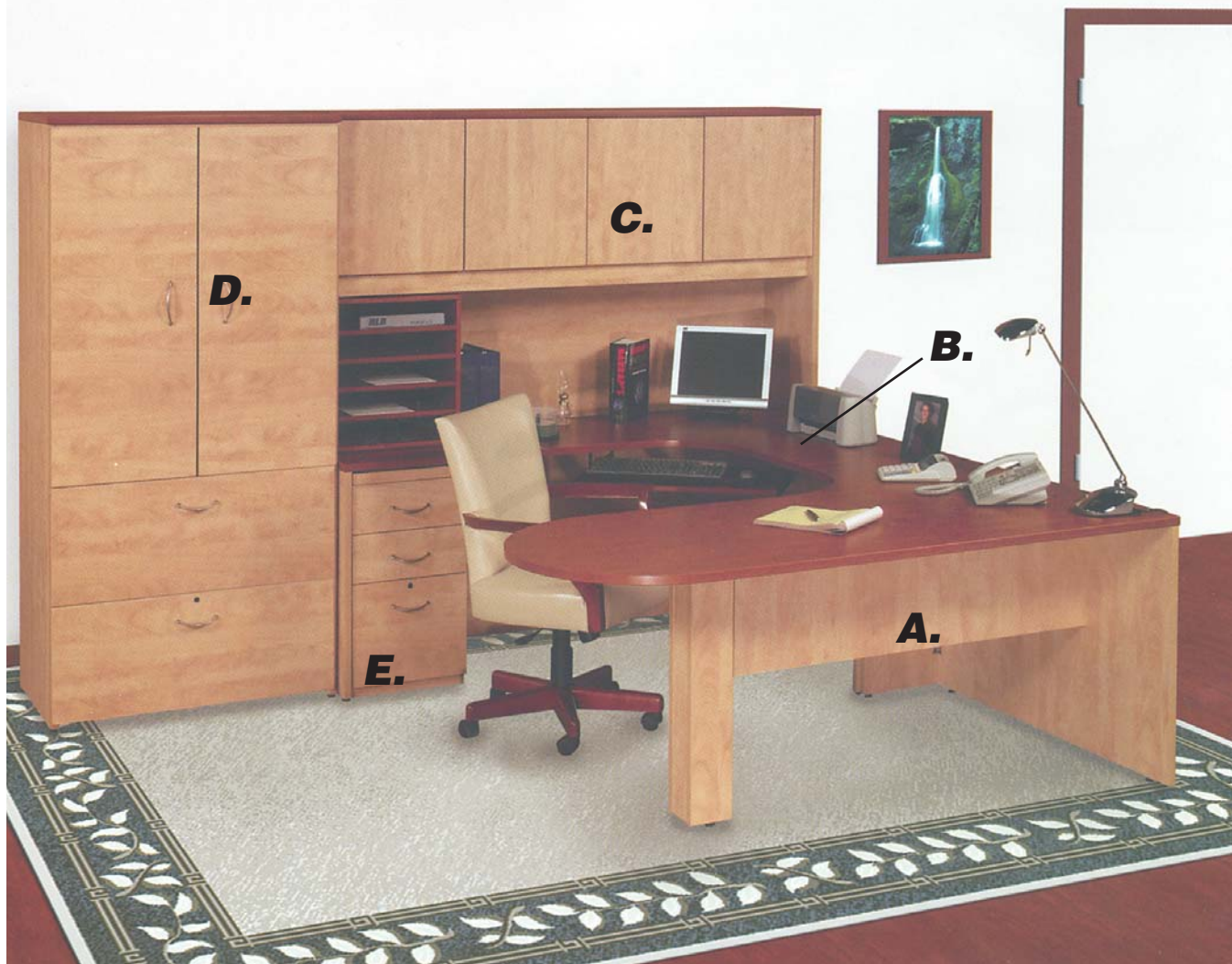
Capacity: 150 lbs.

Ship wt.: 3 lbs.

Model No. OE227



OFFICE DESKS



OMNI 2 SERIES

- Distinctive, modern design
- 2.5 mm PVC edging (0.5 mm on pedestals)
- Full extension ball-bearing slides on all file drawers
- Colour: Cognac/Secret
- Available in other colours
- Ships fully assembled

BUROKALE INC.

| Model No. | Dimensions" | | | | | Description |
|--|-------------|---|----|---|----|-------------|
| | L" | x | W" | x | H" | |
| A. "D" SHAPED TABLE | | | | | | |
| OG391 | 72 | x | 46 | x | 29 | Right |
| OG392 | 72 | x | 46 | x | 29 | Left |
| * "P" TOP ALSO AVAILABLE | | | | | | |
| OG393 | 72 | x | 46 | x | 29 | Right |
| OG394 | 72 | x | 46 | x | 29 | Left |
| B. EXTENDED CORNER | | | | | | |
| OG395 | 72 | x | 46 | x | 29 | Right |
| OG396 | 72 | x | 46 | x | 29 | Left |
| C. 4-DOOR HUTCH | | | | | | |
| OG397 | 72 | x | 15 | x | 43 | |
| D. STORAGE UNITS WITH 2 ADJUSTABLE SHELVES AND 2 LATERAL FILE DRAWERS | | | | | | |
| OG398 | 36 | x | 20 | x | 72 | |
| OG400 also available 2 drawer/1 pedestal file/1 lateral file unit | | | | | | |
| E. PEDESTAL WITH 2 UTILITY DRAWERS AND 1 FILE DRAWER | | | | | | |
| OG399 | 72 | x | 46 | x | 29 | |

COMPUTER STATION

- Ventilated CPU compartment
- Overall dimensions:
60" W x 30" D x 29" H
- Light oak

Model No. OE505



B140

21084E

905-814-6859 - 1-866-514-3289 - www.marcur.com

SAFES & DESK ACCESSORIES

SAFES

GRAND PRIX LINE CABINETS

Keep documents intact for one full hour despite exterior temperatures as high as 927°C (1700°F).

Features include:

- Heavy gauge satin coat steel with antirust treatment
- Insulated with moisture pockets between the walls
- Heavy-duty hinges
- 6" continuous fixed locking bar
- Key changing combination lock
- Adjustable shelf
- Heavy-duty caster base

LEDGER CABINET

Full size ledger safe ensures document security despite ambient temperatures reaching 1000°C (1850°F) for a full two hours.

Features include:

- Three heavy-duty hinges
- Three adjustable shelves
- Key changing combination lock
- Caster base

FOB St-Jérôme



GARDEX

Ledger Cabinet



| Model No. | | Mfg. No. | Outside Dimensions | | | Inside Dimensions | | | Cap. Cu. in. | Shelves | Wt. lbs. |
|---|-------|----------|----------------------|--------------------------|--------------|-------------------|-----|--|--------------|---------|----------|
| Black | Beige | | W" x D" x H" | W" x D" x H" | W" x D" x H" | | | | | | |
| ULC listed 177° C (350°F) for 1 hour | | | | | | | | | | | |
| OC750 | OA690 | GX-1 | 18 1/2 x 18 1/2 x 24 | 15 1/2 x 13 1/2 x 17 1/2 | 3662 | 1 | 175 | | | | |
| OC751 | OA691 | GX-2 | 21 1/2 x 21 1/2 x 29 | 18 3/8 x 16 1/2 x 22 3/8 | 6778 | 1 | 250 | | | | |
| OC752 | OA692 | GX-3 | 26 1/2 x 26 1/2 x 39 | 23 3/8 x 21 1/2 x 32 1/4 | 16,200 | 2 | 455 | | | | |
| OC753 | OA686 | GX-4 | 26 1/2 x 26 1/2 x 50 | 23 3/8 x 21 1/2 x 42 1/4 | 21,222 | 3 | 575 | | | | |
| Ledger Cabinet Manufacturers Certified 177° C (350°F) for 2 hours (Class B) | | | | | | | | | | | |
| OC749 | OC736 | GX-5020 | 26 1/2 x 26 1/2 x 60 | 20 x 20 x 50 | 20,000 | 3 | 910 | | | | |

VERTICAL FILES W/RECESSED DRAWER HANDLES

- High drawer sides and recessed handles
- 26 1/2" deep cabinet with 25" of filing space
- Triple-tiered full extension cradle
- Drawer suspension
- Designer-style recessed drawer pulls, integral finger latch and magnetic label holder
- Accepts hanging files without the use of hangrails
- Spring loaded follower block
- 5-point case reinforcement
- Core removable lock included
- Available in putty or black
- Legal 18 1/4" W x 26 1/2" D



2 Drawers 29" H - Weight: 68 lbs.

Model No. OE456 Black

Model No. OE457 Putty

4 Drawers 52" H - Weight: 122 lbs.

Model No. OE458 Black

Model No. OE459 Putty

5 Drawers 60" H - Weight: 145 lbs.

Model No. OE462 Black

Model No. OE463 Putty

HEAVY-DUTY KEYBOARD DRAWERS

HEAVY-DUTY SLIDE OUT TRAYS

- Adjustable mounting brackets
- Smooth action ball bearing slides
- Available with or without extendible mouse platform
- Tray size: 11" x 23" w/o mouse platform

| Model No. | Description |
|-----------|--------------------------------|
| OB536 | Keyboard tray |
| OB537 | Keyboard tray w/mouse platform |



OB538



OB539



HEAVY-DUTY ARTICULATING KEYBOARD TRAYS

- Fully articulating swing arm is height/depth adjustable
- Swivel mount with tilt tray feature
- Includes anti-skid surface
- Keyboard stores under work surface
- Tray size: 11" x 23" w/o mouse platform; 11 1/2" x 21 1/2" w/extendible mouse platform

Model No. OB538

Model No. OB539 w/mouse platform

LATERAL FILES

- Professional quality, all-welded construction
- Patented heavy gauge all-metal anti-tip system
- Reinforcing cross member on all 4 and 5 drawer files
- Locking mechanism with "no plastic parts" locks all drawers
- Drawers rest on heavy gauge, triple extension progressive arms containing 80 steel ball bearings per pair
- Dimensions: 18" D x 36" W (also available in 30" and 42" widths)
- Standard colours: Beige, black and light grey
- Other colours also available

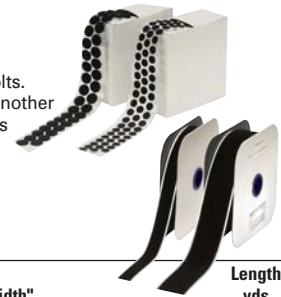


RLB
INDUSTRIES

| Model No. | | | Description | Height" | Wt. lbs. |
|-----------|-------|-------|-------------|---------|----------|
| Black | Beige | Grey | | | |
| OE738 | OE739 | OF205 | 2 drawers | 28 | 100 |
| OE740 | OE741 | OF208 | 3 drawers | 40 | 137 |
| OE723 | OE724 | OF206 | 4 drawers | 53 1/2 | 178 |
| OE742 | OE743 | OF207 | 5 drawers | 65 1/2 | 217 |

HOOK & LOOP FASTENERS

Alternative to zippers, screws, snaps and bolts. One nylon strip consists of tiny hooks and another consisting of soft pliable loops. Simply press together to fasten and pull apart to open. Current applications include the apparel, furniture, packaging and printing industries. Available in peel and stick adhesive backed models or regular style (sew-on) models.



| Hook | | Loop | | Width" | Length yds |
|--------------------------------|-------|-------|-------|-----------|---------------|
| White | Black | White | Black | | |
| PEEL & STICK (ADHESIVE BACKED) | | | | | |
| OC439 | OC440 | OC441 | OC442 | 3/4 | 10 |
| OC500 | OC501 | OC502 | OC503 | 1 | 10 |
| OC447 | OC448 | OC449 | OC450 | 3/4 | 25 |
| OC504 | OC505 | OC506 | OC507 | 1 | 25 |
| REGULAR - SEW-ON | | | | | |
| OC455 | OC456 | OC457 | OC458 | 3/4 | 10 |
| OC508 | OC509 | OC510 | OC511 | 1" | 10 |
| OC463 | OC464 | OC465 | OC466 | 3/4 | 25 |
| OC512 | OC513 | OC514 | OC515 | 1" | 25 |
| ADHESIVE BACKED DOTS | | | | | |
| White | Black | White | Black | Dot Size" | Dots/Box |
| OC471 | OC472 | OC473 | OC474 | 1/2 | 500 |
| OC475 | OC476 | OC477 | OC478 | 3/4 | 500 |
| OC479 | OC480 | OC481 | OC482 | 1/2 | 3040 |
| OC483 | OC484 | OC485 | OC486 | 3/4 | 2110 |

20001E

B141

CABINETS & BOOKCASES

ALL-IN-ONE FILING SYSTEM

The most versatile filing and storage system on the market today! All The Storage You Will Ever Need In One Compact Unit!

- 2 models
- Full size filing cabinets
- 2 or 3 shelf storage cabinet
- Box storage drawer

IDEAL FOR OFFICE OR INDUSTRIAL USE.

ALL-IN-ONE Filing System combines storage with filing and locking security in one unit. Letter size file drawers have flush front and recessed handles. Drawer slides are roll formed for strength and straightness. Allows drawers to move smoothly and easily when fully loaded. Box drawer is great for storing all your small items. Fully welded lockable cabinet pedestal includes adjustable shelf. Attractive putty baked-on enamel finish. Shipped fully assembled ready for use.

CHOOSE FROM 4 MODELS

Models OC379 & OA040

Gives you two full size file drawers, a convenient box storage drawer and a 35 5/8" high storage cabinet with one adjustable shelf.

Models OC380 & OA499

Comes with three full size file drawers and 42" high storage cabinet with two adjustable shelves.

| Model No. | Black | Beige | Description | Drawer Style |
|-----------|-------|-------|--|--------------------------------|
| OC379 | OA040 | | Overall Size: 36" W x 18" D x 35 5/8" H Cabinet size: 17 1/8" W x 18" D x 35 5/8" H | 1 Box Drawer 2 File Drawers |
| OC380 | OA499 | | Overall Size: 36" W x 18" D x 42" H Cabinet Size: 17 1/8" W x 18" D x 42" H | 3 File Drawers |

Box Drawer 12 5/8" W x 18" D x 4" H
File Drawer 12 5/8" W x 18" D x 11 1/2" H



OA040



OA499

FIRE RESISTANT FILING CABINETS

Filing cabinets are ULC listed. Cabinets maintain interior temperatures below 177°C (350°F) in ambient temperatures reaching 927°C (1700°F) for 1 hour. The char point of paper is only 230°C (420°F). Valuable documents, mailing lists and records are kept safe from fire and theft. Each drawer is independently insulated to protect documents even when another drawer is left open. Key operated plunger lock secures all drawers.

VERTICAL FILING CABINETS

| Model No. | Black | Beige | Mfg No. | Outside Dimensions | Inside Dimensions | Wt. lbs. |
|-----------|-------|-------|-------------|--------------------|-------------------|----------|
| | | | | H" x W" | x D" H" x W" | |
| OC737 | OC740 | GF400 | 54 x 19 3/4 | x 31 10 1/2 | x 15 x 26 | 640 |
| OC738 | OC741 | GF300 | 41 x 19 3/4 | x 31 10 1/2 | x 15 x 26 | 490 |
| OC739 | OC742 | GF200 | 28 x 19 3/4 | x 31 10 1/2 | x 15 x 26 | 360 |

HORIZONTAL FILING CABINETS

| Model No. | Black | Beige | Mfg No. | Outside Dimensions | Inside Dimensions | Wt. lbs. |
|-----------|-------|-------|-------------|--------------------|-------------------|----------|
| | | | | H" x W" | x D" H" x W" | |
| OC743 | OC746 | GL404 | 55 x 38 3/4 | x 23 1/2 10 1/2 | x 32 1/2 x 15 1/2 | 1020 |
| OC744 | OC747 | GL403 | 42 x 38 3/4 | x 23 1/2 10 1/2 | x 32 1/2 x 15 1/2 | 720 |
| OC745 | OC748 | GL402 | 29 x 38 3/4 | x 23 1/2 10 1/2 | x 32 1/2 x 15 1/2 | 505 |



ALL STEEL BOOKCASES

Welded steel bookcases arrive set-up and ready to use in a variety of office, plant, home, or warehouse environments. Heavy gauge shelves are adjustable on 2" increments allowing numerous configurations for storage of books, binder, catalogs, and other reference materials. Units are all 12" deep by 36" wide.

| Model No. | Black | Grey | Putty | Dimensions | No. of Openings | Wt. lbs. |
|-----------|-------|-------|--------|--------------|-----------------|----------|
| | | | | H" x D" x W" | | |
| OA487 | OA488 | OA489 | 29 | x 13 x 36 | 2 | 46 |
| OA490 | OA491 | OA486 | 40 | x 13 x 36 | 3 | 58 |
| OA484 | OA485 | OA037 | 52 1/2 | x 13 x 36 | 4 | 76 |
| OA492 | OA493 | OA034 | 66 | x 13 x 36 | 5 | 89 |
| OA036 | OA481 | OA483 | 78 | x 13 x 36 | 6 | 102 |



DATA WORKSTATIONS

ECONOMY WORKSTATIONS

- Moulded shelf and legs won't scratch, dent or rust
- Complete with surge electric and 4" casters (two with brakes)
- Assembly required
- 32" W x 24" D x 27" H



| Model No. | | | Description | Wt. lbs. |
|-----------|-------|--------|---------------------|----------|
| Black | Grey | Almond | | |
| OD272 | OD273 | OD271 | Economy Workstation | 34 |

HEAVY-DUTY COMPUTER WORKSTATIONS

- Mobile workstation with pullout keyboard shelf
- Complete with surge electric and 8" pneumatic tires for transporting delicate equipment
- Assembly required
- 32" W x 24" D x 31" H



| Model No. | | | Description | Wt. lbs. |
|-----------|-------|-------|------------------------|----------|
| Black | Grey | Putty | | |
| OD268 | OD269 | OD270 | Heavy Duty Workstation | 70 |



DATA WORKSTATIONS

The high impact yellow polystyrene panels measure 26" x 13" for **Model FD038** and 9" x 12 1/2" for **Model FF118**. Used in Quality Control departments, production lines, laboratories and construction sites. Includes clips, two panels and an acrylic cover on the sloped writing surface. Height to the writing surface 42", overall height 55 1/2".

Model No. FD038

WALL MOUNT DATA WORKSTATION

This compact unit is designed for mounting to machines or walls, anywhere space is limited. Includes clips, acrylic cover on writing panel and a rigid mounting bracket with a 20" reach.

Model No. FF118



QUICKFIND DOCUMENT SORTER

- *QuickFind* holds and protects your frequently used documents
- Unique, non-glare, *QuickLoad* sleeve makes pages easy to read and file
- Ergonomic design allows user to easily change angle to meet specific needs
- Holds 10 pages, but can be increased using the extension set, **Model OE815**

- Extension set includes two of each color sheet protector: blue, green, black, red and yellow
- Easily assembled without tools or screws
- Hardware is included for wall mount **Model OE814**

| Model No. | Description | Dimensions | | |
|-----------|---------------------|------------|----------|----------|
| | | L" | W" | H" |
| OE832 | Desktop starter kit | 18 | x 11 1/8 | x 11 5/8 |
| OE814 | Wall starter set | 18 | x 11 1/8 | x 11 5/8 |



PERSONNEL GROUNDING PRODUCTS

TABLE MAT KITS

- Vinyl static dissipative table mats drain static charges to protect static sensitive materials such as electronics, computers and instruments
- A three-layer construction provides excellent electrical properties
- Top layer is a tough dissipative vinyl, the centre layer has a highly conductive metal scrim and the bottom layer is dissipative foam, which provides a great cushion and will not slip
- Kit includes 15' common point ground, which attaches to a wrist strap
- Surface resistivity: 107 – 108 ohms/sq.

| Model No. | Size" |
|-----------|---------|
| OE833 | 24 x 36 |
| OE834 | 24 x 48 |



ARSTAT

WRIST STRAPS

Arstat 5000 Series Wrist Straps

- Premium performance wrist straps use a silver-plated monofilament, continuous thread throughout the nylon band, which establishes a 360° conductive path to maintain reliable continuity
- Stainless steel back plate ensures skin contact
- Available with a 6' or 10' cord, complete with 1 megohm resistor

| Model No. | Description |
|-----------|--------------------|
| OE841 | With 6' coil cord |
| OE842 | With 10' coil cord |

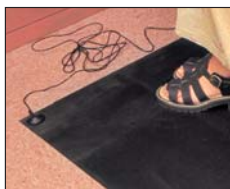


ARSTAT

FLOOR MAT KITS

- Conductive rubber floor mats are designed to drain static charges to the ground, using a path created from a conductive surface
- Resists solder, fluxes and most acids used in an electronic production area
- Kit includes 15' mat ground cord and heel grounder
- Surface resistivity: 104 – 105 ohms/sq.

| Model No. | Size" |
|-----------|---------|
| OE835 | 48 x 48 |
| OE836 | 48 x 60 |
| OE837 | 48 x 72 |



ARSTAT

HEEL & TOE GROUNDERS

- Disposable heel grounder is made from black polyethylene with adhesive attachments
- Designed to discharge static from a person to a grounded walking surface
- Reusable
- Built-in resistor for safety

| Model No. | Description |
|-----------|-----------------------------|
| OE838 | Disposable Heel Grounder |
| OE839 | Toe Grounder with Resistor |
| OE840 | Heel Grounder with Resistor |



ARSTAT

COMPUTER CABINETS

ALL WELDED DESK TOP CABINET

Includes locking slide-in pocket doors with inner compartments for storage of files or manuals. Pull out keyboard shelf has ample storage space for diskettes and supplies. Sliding tray may be used for mouse pad or as a writing surface. Vented back for air circulation. Ships fully assembled in blue and grey baked enamel finish.

Model No. OC533

OPEN PEDESTAL STAND

32" high and is designed to support the desk top unit for stand up operation. Features include a convenient storage shelf and adjustable leg levelers for uneven work surfaces. Shipped knocked down. Blue baked enamel finish.

Model No. OC534

ENCLOSED BASE/ PRINTER STAND

Features a roll in/roll out hideaway printer stand which locks inside the enclosure when not in use. The printer stand has two adjustable, one bottom 28" W x 25" D shelves for printers or peripherals and paper. 30" high enclosure may be oriented for left or right hand access. Shipped knocked down. Blue and grey baked enamel finish.

Model No. OC535

Desk top cabinet with
enclosed base/printer stand



| Model No. | Description | Dimensions | | | | | Wt. lbs. |
|-----------|--|------------|---|--------|---|----|----------|
| | | W" | x | D" | x | H" | |
| OC533 | Desk top computer cabinet | 30 | x | 27 3/4 | x | 30 | 122 |
| OC534 | Computer cabinet open pedestal base | 30 | x | 27 3/4 | x | 32 | 66 |
| OC535 | Computer cabinet enclosed base w/printer stand | 30 | x | 27 3/4 | x | 33 | 142 |

MOBILE COMPUTER CABINET

Cabinet provides heavy-duty storage for valuable electronic equipment. Features include all-steel welded construction. Top monitor compartment is 22 1/2" W x 23" D x 18 3/4" H and includes a slide-out keyboard shelf. It locks independently of bottom section which includes 2 adjustable shelves. Unit is fully mobile with 5" polyolefin casters 2 rigid, and 2 swivel w/brake. Includes vented back for air circulation and a 6 outlet power strip with built-in surge suppression. Shipped fully assembled with a durable blue and light grey baked enamel finish.

Total dimensions: 26" W x 24" D x 64" H.

Wt.: 149 lbs.

Model No. OC532

MOBILE COMPUTER CABINET

Mobile cabinet allows you to house your terminal, keyboard, printer and paper all in one place. Lower cabinet, 24 5/8" W x 22 7/8" D x 22 5/8" H, is lockable. The two position shelf can be located for desk top style or up to 18" H tower style CPU's. The fixed shelf at 24 5/8" W x 22 7/8" D x 11 1/2" H provides ample room for any sheet fed style or continuous form style printer. Slide-out keyboard tray has a comfortable wrist rest area to reduce fatigue. Top features back and end stops to hold supplies while in transit. Cabinet rolls easily on 5" polyolefin casters (2 swivel w/brakes, 2 rigid). Rear cabinet access holes for paper feed, cables and ventilation fan (not included) are also provided. Plastic wire ties and mounting holes are provided for tidy cable management. All steel construction.

Shipped knocked down, assembly required with simple hand tools.

Total dimensions:
27" W x 24" D x 49 1/4" H.

Wt.: 125 lbs.
Colour: Blue.

Model No. OC839



COMPUTER CABINETS

- A unique two-piece heavy-duty all-welded steel construction that provides space efficient security for your valuable electronic equipment
- Locking upper compartment with plexiglass window provides viewable access for most 20" monitors
- Locking pull-out drawer facilitates ergonomic operation of keyboard, mouse and convenient storage of small supplies
- Keyboard and supplies can be accessed even while top and bottom compartments are locked
- Lower compartment features one fixed bottom and one adjustable shelf
- Louvers in the rear provide equipment ventilation
- Heavy-duty all-welded steel top and bottom sections bolt together for easy assembly
- Includes two rigid and two swivel with brake 5" casters allowing full mobility



| Model No. | Description | Dimensions | | | | | Colour |
|-----------|---------------------------------------|------------|---|--------|---|--------|------------|
| | | W" | x | D" | x | H" | |
| OE824 | Complete computer enclosure w/casters | 24 1/2 | x | 22 1/2 | x | 59 1/2 | Light grey |
| OE825 | Complete computer enclosure w/casters | 24 1/2 | x | 22 1/2 | x | 59 1/2 | Putty |
| OE826 | Top level (internal) | 20 3/4 | x | 21 3/4 | x | 19 1/4 | Light grey |
| OE827 | Top level (internal) | 20 3/4 | x | 21 3/4 | x | 19 1/4 | Putty |
| OE828 | Lower level (internal) | 20 3/4 | x | 21 3/4 | x | 23 1/2 | Light grey |
| OE829 | Lower level (internal) | 20 3/4 | x | 21 3/4 | x | 23 1/2 | Putty |

FILING SYSTEMS

MOBILE PLAN CENTRE

- Steel construction with four ball bearing swivel casters (2 lock)
- Large capacity unit
- Width adjusts up to 43 3/4" long*
- Holds up to 18 clamps that drop in and lift out
- Clamps sold separately
- Colour: Tropic Sand



| Model No. | Description | Wt. lbs. |
|-----------|---|----------|
| OA682 | Mobile Plan Centre 51" H x 25" 3/4 - 43 3/4" W x 20 1/2" D | 35 |

ROLLING PROJECT FILE

- Accommodates twelve 18" hanging clamps, 18 x 14" folders, letter size and legal size folders
- Bottom basket for additional storage
- Only 24 1/2" high; tucks under most works surfaces
- 4 swivel casters (2 locking)
- Light grey tubular steel frame; chrome wire supports
- Dimensions: 24 1/2" H x 21 3/4" W x 13" D
- Weight: 8 lbs.



Model No. OE134

WIRE ROLL FILE

Organize, protect and keep oversize documents within ready reach. Exclusive dustguard bottom keeps materials clean and protects edges from tearing and bending. 2 different compartment heights; four 8" x 8" storage bins. Heavy-gauge steel rod construction with white plastic coating; select documents at a glance. Swivel casters.

Dim.: 30 1/2" H x 16 1/4" W x 16 1/2" D.
Assembly required.
Wt. 12 lbs.

Model No. OA209



TUBULAR STEEL WIRE ROLL FILES

Low price, high quality appearance. Light grey tubular steel frame with chrome plated grids. Twin wheel casters (2 lock).

Dim.: 23 3/8" H x 18 1/3" W x 14 3/8" D.
Shipped knocked down.

| Model No. | Tube Description | Wt. Size" | lbs. |
|-----------|------------------|---------------|------|
| OE132 | 12-tube storage | 3 3/4 x 3 3/4 | 9 |
| OE133 | 20-tube storage | 2 3/4 x 2 3/4 | 10 |



STEEL ROLL FILES

High volume storage of materials too large to store flat. Modular design allows files to be used individually or stacked for space-saving storage. Steel constructed cabinets with compartments formed of tough fibreboard, reinforced in front with aluminum moulding; protects materials and increases durability. Index grid on inside of door. Colour: Tropic sand.



| Model No. | Cabinet dimensions | Tubes | Tube Size" | Tube Length" | Wt. lbs. |
|-----------|----------------------|-------|------------|--------------|----------|
| OE633 | 15 1/4 x 15 1/4 x 32 | 16 | 3 1/4 | 31 | 36 |
| OA669 | 15 1/4 x 15 1/4 x 38 | 16 | 3 1/4 | 37 | 43 |
| OE634 | 15 1/4 x 15 1/4 x 44 | 16 | 3 1/4 | 44 | 47 |
| OA670 | 15 1/4 x 15 1/4 x 38 | 36 | 2 1/4 | 37 | 45 |
| OE635 | 15 1/4 x 15 1/4 x 44 | 36 | 2 1/4 | 43 | 50 |

UPRIGHT ROLL FILES

Economical files keep drawings, blueprints and charts organized and within easy reach. Constructed of heavy-duty corrugated fibreboard with walnut wood-grain finish. Tubes reinforced by plastic moulding. Slotted hand hole in back; 4 rubber feet. O.A.: 22" H (12" high in front) x 15" W x 12" D. Wt. 4 lbs. Shipped knocked down.



| Model No. | No. of Tubes | Tube Size " |
|-----------|--------------|-------------|
| OA206 | 12 | 3 7/8 sq. |
| OA672 | 20 | 2 3/4 sq. |

TELESCOPING DOCUMENT TUBE

Ideal for protecting your documents during storage or transport. Expands from 24 1/2" to 40" to fit most documents. The telescoping tube has markings in 1 1/2" increments and locking tabs in 3/4" increments, allowing you to quickly find and lock into the desired size. Made of tough plastic with screw on end-cap to provide extra protection.

Dimensions: 3 1/2" Dia. x 24 1/2" L
Weight: 1.2 lbs.

Colour: Black

Model No. OE693



MOBILE ROLL FILES

The ideal form of active filing for engineers, draftsmen, surveyors and designers. Materials store upright in square fibreboard tubes; grandstand design allows different size rolls to be stored in one file. Sturdy, wood-core construction with laminate beige vinyl covering. Swivel casters. Shipped knocked down.



| Model No. | Tube Size" | No. of Tubes | Overall Dimensions | Wt lbs. |
|-----------|---------------|--------------|--------------------------|---------|
| OA655 | 3 3/4 x 3 3/8 | 12 | 23 1/2 x 15 1/4 x 13 1/4 | 21 |
| OA677 | 3 3/4 x 3 3/4 | 21 | 29 1/8 x 30 1/8 x 15 3/4 | 52 |
| OA673 | 2 3/4 x 2 3/4 | 20 | 23 1/2 x 15 1/4 x 13 1/4 | 22 |
| OA207 | 2 3/4 x 2 3/4 | 50 | 29 1/8 x 30 1/8 x 15 3/4 | 53 |
| OE131 | 7 x 7 | 8 | 29 1/8 x 30 1/8 x 15 3/4 | 46 |

CORRUGATED ROLL FILES

Safe storage of charts and blueprints up to 43" long. Corrugated fibreboard shell with reinforced steel frame for added strength. Square tube compartments allow easy insertion and removal of contents. Dust resistant door with metal latch keeps materials clean. Index grid for easy identification of contents. Cabinets are 15 3/4" square; depth is 3/4" more than tube length shown below. Colour: Tropic sand.



| Model No. | Tubes | Tube Size" | Tube Length" | Wt. lbs. |
|-----------|-------|------------|--------------|----------|
| OA676 | 16 | 3 3/4 | 25 | 12 |
| OA191 | 25 | 3 | 25 | 13 |
| OA210 | 36 | 2 1/2 | 25 | 14 |
| OA211 | 16 | 3 3/4 | 37 | 15 |
| OA658 | 25 | 3 | 37 | 16 |
| OA661 | 36 | 2 1/2 | 37 | 17 |
| OA656 | 16 | 3 3/4 | 43 | 17 |
| OA194 | 25 | 3 | 43 | 18 |
| OA205 | 36 | 2 1/2 | 43 | 19 |

FILING SYSTEMS

VERTICAL FILING SYSTEMS

Ideal for filing blueprints, charts, artwork and other oversized documents. Cuts filing and retrieving time; saves on floor space. Exclusive suspension system allows clamps to slip easily in and out of storage racks. Clamps open to 1" to hold up to 100 individual sheets (20 lbs. maximum weight per clamp).

MOBILE VERTICAL FILE

- All steel construction with four ball bearing swivel casters (2 lock)
- Fits 24" to 36" clamps (order separately)
- Holds up to 12 clamps that simply drop in and lift out
- Maximum capacity is 1200 sheets or 240 lbs.
- Compact economy
- Width adjusts from 27 1/2" to 39 1/4"
- Depth is 16" overall
- Height adjusts from 40" to 52"
- Easy assembly
- Weight: 25 lbs.

Model No. OE130



HEAVY DUTY MOBILE STAND

- Steel construction with four 3" ball bearing swivel casters (2 lock)
- Holds 12 hanging clamps in pivot brackets that swing open for easy access to contents
- Tropic sand finish
- Height adjusts from 43 5/8" to 61 5/8" for sheets up to 54" long
- 27" overall width
- Easy set-up
- Base extends 7 1/2" to 37 1/2"



| Model No. | Description | Wt. lbs. |
|-----------|--------------------------------|----------|
| OE129 | Mobile Stand only | 47 |
| OA195 | Mobile Stand c/w 12-24" Clamps | 61 |
| OA196 | Mobile Stand c/w 12-30" Clamps | 63 |
| OA213 | Mobile Stand c/w 12-36" Clamps | 65 |
| OA197 | Mobile Stand c/w 12-42" Clamps | 67 |

PRINT-LOCK® HANGING CLAMPS



- Clamps hold up to 100 sheets or 20 lbs.
- Green plastic label holders included
- Available in natural aluminum with polished chrome plated cast alloy wing knobs and black end caps



| Model No. | Description | Clamp pkg. | Wt. lbs. |
|-----------|------------------|------------|----------|
| OE135 | 18" long Hanging | 6 | 6 |
| OE136 | 24" long Hanging | 6 | 7 |
| OE137 | 30" long Hanging | 6 | 8 |
| OE138 | 36" long Hanging | 6 | 9 |
| OE139 | 42" long Hanging | 6 | 10 |

PIVOT WALL RACKS

Mounts directly to wall for space saving storage. 12 pivot clamps hold any length sheet depending on mounting height. Steel construction. Dimensions: 9 1/2" H x 24" W. Includes mounting hardware.



| Model No. | Description | Wt. lbs. |
|-----------|-----------------------------------|----------|
| OA192 | Pivot Wall Rack c/w 12-24" clamps | 31 |
| OA193 | Pivot Wall Rack c/w 12-30" clamps | 33 |
| OA208 | Pivot Wall Rack c/w 12-36" clamps | 35 |
| OA214 | Pivot Wall Rack c/w 12-42" clamps | 37 |
| OA216 | Wall Rack only | 6 |
| OA663 | Pivot Brackets 12/pkg | 10 |

DROP/LIFT WALL RACKS

Hanging clamps simply drop in and out of rack for easy, economical filing. Comes with 12 clamps. Entire rack extends less than 12" from wall. Steel construction.

Includes mounting hardware.



| Model No. | Description | Wt. lbs. |
|-----------|---------------------------------------|----------|
| OA188 | Drop Lift Wall Rack only | 2 |
| OA203 | Drop Lift Wall Rack c/w 12-24" clamps | 16 |
| OA202 | Drop Lift Wall Rack c/w 12-30" clamps | 18 |
| OA218 | Drop Lift Wall Rack c/w 12-36" clamps | 20 |
| OA219 | Drop Lift Wall Rack c/w 12-42" clamps | 22 |

VERTICAL FILING CABINETS

All steel construction provides secure, high density, bulk storage of reproductions. Cabinet holds up to 12 hanging clamps (clamps not included). Doors can mount for left or right hand operation and comes with locking handle.

- Small cabinet holds 18" to 24" clamps
- Large cabinet holds up to 36" clamps
- Colour: Tropic Sand



| Model No. | Description | Wt. lbs. |
|-----------|----------------------------------|----------|
| OB142 | Small: 42" H x 16" W x 27" D | 78 |
| OB143 | Large: 54 1/2" H x 16" W x 39" D | 127 |

MASTERFILE2

The *MasterFile2* is an ultra dense filing system that allows for quick and easy document retrieval and storage. The insulated double wall construction provides excellent document protection. Utilizing the self-adhesive, pre-punched carrier strips (not included) the innovative pin and post system puts your documents at your fingertips.

Colour: Autumn Haze.

(Drawing selector included).

Capacity: 1,600 3-mil documents.

| Model No. | Description | Wt. lbs. |
|-----------|-------------------------------|----------|
| OE466 | For documents up to 24" x 36" | 252 |
| OE619 | For documents up to 30" x 42" | 320 |
| OE620 | For documents up to 48" x 36" | 393 |



CARRIER STRIPS

All *Carrier Strips* are self-adhesive and can be cut into 100 - 24" strips, 80 - 30" strips or 50 - 48" strips.

Carrier Strips, Film (OE621)

Strong tape stock with pre-printed identification blocks for drawings. Weight: 3.0 lbs.



OE621

Carrier Strips, Transparent (OE622, OE623)

Transparent polyester that shows border markings of pre-printed materials. Weight: 2.0 lbs.



OE622



OE623



FILING SYSTEMS

STEEL PLAN FILES

- Welded steel construction, wrap around corners and sturdy inner frame
- Front supports add stacking strength
- Files are modular so they can be used individually or in a space saving stack
- Up to five high on a closed base
- Reinforced top offers additional work and storage space
- 5 and 10-drawer files can be mixed or matched for customized high volume storage
- Choice of 6" closed base or 20" high base
- Baked enamel finish in
Tropic sand, white, grey or black
- All flat files have museum/archival quality point finish



5 DRAWERS

- Versatile file stores up to 500 sheets per unit active filing, 750 sheets of semi-active, or 1,000 sheets of inactive material
- Five large capacity 2" deep drawers in three cabinet sizes



10 DRAWERS

- Ideal for high traffic project storage areas
- Ten 1" deep drawers allow the easiest retrieval of materials from the file and minimize material damage



| Model No. | | | | Description | Inside Drawer | | | | | Cabinet | | | | | Wt. lbs. |
|--|-------|-------------|-------|-------------------------|---------------|---|----|---|----|---------|---|--------|---|--------|----------|
| Black | Grey | Tropic Sand | White | | H" | x | W" | x | D" | H" | x | W" | x | D" | |
| OB144 | OB146 | OA651 | OB145 | 5 Drawer | 2 1/8 | x | 37 | x | 26 | 16 1/2 | x | 40 3/8 | x | 29 3/8 | 177 |
| OB147 | OB148 | OA186 | OB149 | 5 Drawer | 2 1/8 | x | 43 | x | 32 | 16 1/2 | x | 46 3/8 | x | 35 3/8 | 222 |
| OB150 | OB151 | OA220 | OB152 | 5 Drawer | 2 1/8 | x | 50 | x | 38 | 16 1/2 | x | 53 3/8 | x | 41 3/8 | 267 |
| OB157 | OB158 | OA189 | OB159 | 10 Drawer | 1 1/8 | x | 43 | x | 32 | 16 1/2 | x | 46 3/8 | x | 35 3/8 | 307 |
| OPTIONAL LOCKS: OG362 - 5 drawer units | | | | OG363 - 10 drawer files | | | | | | | | | | | |

OPTIONAL LOCKS: OG362 - 5 drawer units OG363 - 10 drawer files

OPTIONAL BASES FOR STEEL PLAN FILES

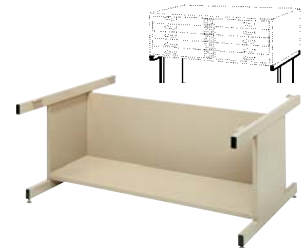
Closed Bases

- Holds up to five files
- Raises files 6" off ground
- Recessed 2 3/4"



High Bases

- Raises files 20" off the floor and raises top of file to a 36" level to provide work space
- Enclosed back and sides and open front provide extra bookshelf space



| Model No. | | Tropical | | | | Wt. |
|-----------|-------|----------|-------|---|--|------|
| Black | Grey | Sand | White | Description | | lbs. |
| OB172 | OB173 | OA653 | OB174 | Closed Base for OB144, OB146, OA651 and OB145 Cabinets | | 22 |
| OB175 | OB176 | OA204 | OB177 | Closed Base for OB147, OB148, OA186, OB149 and 10 Drawer Cabinets | | 26 |
| OB178 | OB179 | OA187 | OB180 | Closed Base for OB150, OB151, OA220 and OB152 Cabinets | | 30 |

| Model No. | | Tropical | | White | Description | Wt. lbs. |
|-----------|-------|----------|-------|-------|---|----------|
| Black | Grey | Sand | | | | |
| OB160 | OB161 | OB162 | OB163 | | High Base for OB144, OB146, OA651 and OB145 Cabinets | 37 |
| OB164 | OB165 | OB166 | OB167 | | High Base for OB147, OB148, OA186, OB149 and 10 Drawer cabinets | 42 |
| OB168 | OB169 | OB170 | OB171 | | High base for OB150, OB151, OA220 and OB152 Cabinets | 47 |

GIANT STACKING TRAYS

Create durable and efficient flat filing at a fraction of the cost of other systems. Easily accommodates most prints, artwork and drawings. Constructed of steel reinforced, high density polyethylene; stackable up to 5 feet high with a 40 lbs. per tray load capacity. Opposing direction stackability allows access from two sides. Optional wood-core vinyl laminate tops have a light oak finish. 2/Pkg.

Use with existing filing systems for extra storage space.



| Model No. | Inside H" x W" x D" | Outside H" x W" x D" | Qty/ Carton | Wt./ Carton lbs. |
|----------------------|---------------------|----------------------|-------------|------------------|
| OA667 | 2 x 36 3/8 x 24 1/4 | 3 x 39 x 26 | 2 | 23 |
| OA215 | 2 x 42 1/2 x 32 1/2 | 3 x 45 1/4 x 34 | 2 | 32 |
| OPTIONAL TOPS | | | | |
| OA650 | Top for OA667 | 3/4 x 39 x 26 | | 25 |
| OA668 | Top for OA215 | 3/4 x 45 1/4 x 34 | | 43 |



20007E

B147

LITERATURE STORAGE RACKS

LITERATURE STORAGE RACKS

Mfg. No. 31



Mfg. No. 20-12



Mfg. No. 32



Optional legs to permit free standing as illustrated are available for all literature Racks.

Literature racks provide a convenient and compact way to store literature. Keyhole slots are provided for wall mounting. Most models accommodate 150 standard 8 1/2" x 11" sheets, while others are wider to hold magazines and special forms. Construction is of sturdy heavy gauge steel. Standard finishes are Office Grey, Desert Tan, Satin Black and Putty.



Mfg. No. 34-12

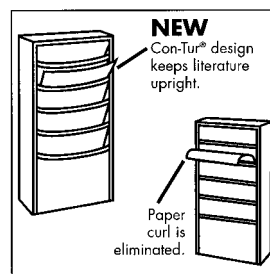


Mfg. No. 33



Mfg. No. 32-12

ROTATING LITERATURE RACKS



Mfg. No. 2033R



Mfg. No. 4032R



Mfg. No. 8831R

| Putty | Grey | Model No. | Tan | Black | Mfg. No. | H" | x | Overall W" | x | D" | W" | x | Openings D" | x | H" | Paper Width" | No. of Pockets | Wt. lbs. |
|---|-------|-----------|-------|-------|----------|--------|---|------------|---|--------|--------|---|-------------|---|-------|--------------|----------------|----------|
| OC540 | OA152 | OA130 | OC536 | OA607 | 31 | 65 1/2 | x | 9 3/4 | x | 4 1/8 | 8 5/8 | x | 3/4 | x | 8 1/2 | 8 1/2 | 23 | 32 |
| OC559 | OA166 | OA156 | OA607 | OC541 | 20-12 | 58 1/2 | x | 13 1/8 | x | 4 1/8 | 12 1/8 | x | 1 | x | 8 3/4 | 12 | 20 | 38 |
| OC541 | OA161 | OA155 | OC537 | OC558 | 32 | 36 | x | 9 3/4 | x | 4 1/8 | 8 5/8 | x | 3/4 | x | 8 1/2 | 8 1/2 | 11 | 18 |
| OC558 | OA148 | OA162 | OA125 | OC543 | 32-12 | 36 | x | 13 1/4 | x | 4 1/8 | 12 1/8 | x | 1 | x | 8 3/4 | 12 | 11 | 24 |
| OC543 | OA169 | OA165 | OC539 | OC557 | 33 | 21 | x | 9 3/4 | x | 4 1/8 | 8 5/8 | x | 3/4 | x | 8 1/2 | 8 1/2 | 5 | 9 |
| OC557 | OA163 | OA144 | OA609 | OC545 | 34-12 | 26 1/4 | x | 13 1/8 | x | 2 | 12 1/8 | x | 5/16 | x | 5 5/8 | 12 | 10 | 13 |
| OC545 | OA171 | OA624 | OC544 | OC556 | | | | | | | | | | | | | | |
| OC556 | OA164 | OA167 | OC555 | | | | | | | | | | | | | | | |
| Optional legs for 9 3/4" wide models (sold in pairs) | | | | | | | | | | | | | | | | | | |
| Optional legs for 13 1/8" wide models (sold in pairs) | | | | | | | | | | | | | | | | | | |
| ROTATING LITERATURE RACKS | | | | | | | | | | | | | | | | | | |
| OC553 | OA149 | OA179 | OC552 | 8831R | | 66 | x | 14 1/8 | x | 14 1/8 | 8 5/8 | x | 3/4 | x | 8 1/2 | 8 1/2 | 88 | 136 |
| OC549 | OA134 | OA158 | OC548 | 4032R | | 48 1/2 | x | 14 1/8 | x | 14 1/8 | 8 5/8 | x | 3/4 | x | 8 1/2 | 8 1/2 | 40 | 92 |
| OC547 | OA145 | OA128 | OC546 | 2033R | | 21 1/4 | x | 14 1/8 | x | 14 1/8 | 8 5/8 | x | 3/4 | x | 8 1/2 | 8 1/2 | 20 | 47 |

WIRE LITERATURE DISPLAY RACKS

Open wire construction keeps material fresh, clean and easy to see. Full-view front displays literature, magazines or forms for fast selection. Three styles available to fit nearly any need, front office, reception room or trade show. Generous 8 3/4" W x 1" D compartment size is ideal for 8 1/2" x 11" material. Welded wire construction with a charcoal powder coat finish.

PANEL/WALL DISPLAY

- Combine multiple racks to create larger displays
- Mounts on a wall or panel (up to 3 1/4" thick); both mounting brackets are included
- Panel hanger is adjustable in 3" increments
- Interlocking design for quick assembly

Model No. OE630



FREE-STANDING FLOOR DISPLAY

- Fast, fold-out set-up for instant literature display

Model No. OE631

ROTARY FLOOR DISPLAY

- Each layer rotates independently for easy selection
- Five dual wheel casters (2 locking)
- Compact knock-down design, ideal for trade shows

Model No. OE632

Model No. OE807



OE630



OE631



OE632

| Model No. | Number of compartments | Dimensions W" x D" x H" | Wt. lbs. |
|-----------|------------------------|-------------------------|----------|
| OE630 | 3 | 9 x 5 1/2 x 43 | 16 |
| OE631 | 9 | 28 1/2 x 11 x 45 3/4 | 14 |
| OE632 | 16 | 15 x 15 x 59 | 20 |
| OE807 | 32 | 15 x 15 x 60 | 24 |

ORGANIZERS/MAILROOM EQUIPMENT

E-Z SORT® MAILROOM FURNITURE

Modular mailroom furniture was created with efficiency and flexibility in mind. Modular units can be used in a wide variety of combinations. Durable constructed of heavy-gauge steel to withstand the everyday rigours of a busy mailroom. All components feature grey baked enamel finish. Assembly required.

A. & B. SORTING TABLE WITH SHELF

Supports up to 500 lbs. on extra-thick 1 1/2" steel legs. Table surface adjusts from 28" to 36" high. Includes shelf that has 14" clearance and 150 lb capacity for additional storage space. Table top is sturdy 1 1/8" thick wood laminate with tough T-mold edges. (Table and Top sold separately – order both)

| Model No. | Description | Colour | W" | x | D" | x | H" |
|-----------|--------------------|--------|----|---|----|---|----------|
| OD938 | Base table w/shelf | Grey | 60 | x | 30 | x | 28 to 36 |
| OD939 | Table top | Grey | 60 | x | 30 | x | 1 1/8 |

C. RISER

Supports one or more modules or can be used on a table for additional workspace to accommodate scales, postage meters and off surface computer storage.

| Model No. | Description | Colour | W" | x | D" | x | H" |
|-----------|-------------|--------|--------|---|----|---|----|
| OD941 | Riser | Grey | 57 1/2 | x | 13 | x | 14 |

D. SORTER MODULE

Features extra-wide 11" mail trays that form any combination of up to 25 compartments. Can be used as stand-alone or stacked. Includes 20 moulded compartment trays, each with finger cut-out and label holder. Shelves adjust in 7/8" increments. Additional mail trays available in cartons of 5.

| Model No. | Description | Colour | W" | x | D" | x | H" |
|-----------|---------------|--------|--------|---|----|---|--------|
| OD940 | Sorter module | Grey | 57 1/2 | x | 13 | x | 14 1/2 |



SAFCO
Creating Your Comfort Zone

DATA ORGANIZERS

A complete line for the horizontal storage of computer print-outs, literature directories and printed material of all kinds. Steel modular, horizontal racks finished in tan enamel that can be grouped for floor or table mounted storage. Print-out racks can house six or eight computer print-outs up to three inches thick. Literature racks, also with the capacity for literature or directories up to three inches thick, are available with nine and twelve openings. 8" legs (Model CA159) are available to raise unit off the floor. All racks easily bolt together with fasteners provided and literature racks are fully interchangeable with print-out racks.

OA159



DURHAM

OA157
(Stacked)



| Specifications | Horizontal Print-Out Rack | | Horizontal Literature Racks | |
|------------------|---------------------------|-------------|-----------------------------|-------------|
| | Model OA613 | Model OA159 | Model OA157 | Model OA168 |
| Height " | 10 3/4 | 14 1/4 | 10 3/4 | 14 1/4 |
| Width " | 33 3/4 | 33 3/4 | 33 3/4 | 33 3/4 |
| Depth " | 11 5/8 | 11 5/8 | 11 5/8 | 11 5/8 |
| Opening Width " | 16 1/2 | 16 1/2 | 11 | 11 |
| Opening Depth " | 11 1/2 | 11 1/2 | 11 1/2 | 11 1/2 |
| Opening Height " | 3 | 3 | 3 | 3 |
| No. of Openings | 6 | 8 | 9 | 12 |
| Paper Width " | 14 | 14 | 8 1/2 | 8 1/2 |

MAIL CENTRES

This steel mail centre features welded, interlocking construction. The unit measures 33 3/4" wide, 19" high and 12" deep and has 18 spacious compartments, each with an area for identification. Units may be stacked vertically or side by side and are furnished with mounting holes and spring clips to secure them firmly into position. A base with removable legs is available which allows the user the option of raising the sorter either 4" or 8". Rubber feet are fitted at the bottom of each sorter to avoid scratching.

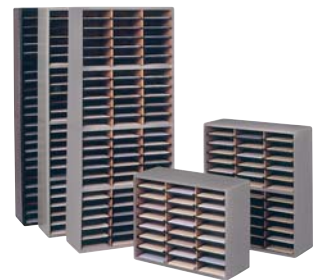
Available in tan baked enamel finish.

DURHAM



VALUE SORTERS®

- Economical yet sturdy steel/corrugated construction
- All steel exterior and support shelves
- Wide shelf fronts have label holders for easy identification of contents (labels included)
- Quick-lock design for easy assembly without tools
- Letter Size Compartments: 9 3/4" W x 12 1/2" D x 2 1/2" H



| Model No. | Description | Dimensions | | | | Wt. lbs. |
|-----------|---------------|------------|---|--------|----------|----------|
| | | H" | x | W" | x D" | |
| OA182 | Mail Centre | 19 | x | 33 3/4 | x 12 | 38 |
| CA159 | Optional Base | 5 3/4 | x | 34 1/8 | x 12 1/4 | 13 |

| Model No. | | No. of Comp. | Overall Dimensions | | | | | Wt. lbs. |
|-----------|-------|-----------------|--------------------|---|--------|---|--------|-------------|
| Black | Grey | | W" | x | D" | x | H" | |
| OA135 | OA132 | 24 | 32 1/4 | x | 13 1/2 | x | 25 3/4 | 26 |
| OA129 | OA126 | 36 | 32 1/4 | x | 13 1/2 | x | 38 | 36 |
| OA139 | OA141 | 72 | 32 1/4 | x | 13 1/2 | x | 75 | 61 |

21086E

B149

WALL CLOCKS, TIME CLOCKS

TIME CLOCK

- Large, easy-to-read analog clock face
- LED display of year, month and date
- Automatic or manual printing
- Print window with light
- Automatically adjusts for Daylight Savings Time, short months, leap year and power outages
- Selectable for 4 digit imprint
- Built-in battery backup



SPECIFICATIONS:

Power Supply: 110/120 AC $\pm 10\%$ (50/60 Hz)
 Power Consumption: Normal 3 W, Max. 12 W
 Ambient Temperature: 14°F - 113°F (-10°C - 45°C)
 Humidity: 10% - 90% (no condensation)
 Dimensions: 6 3/4" W x 6 1/4" D x 8" H
 150 x 172 x 165 (mm)
 Weight: 6 lbs. (2.7 kg)

*Available in 220/240 V AC on special order only.

| Model No. | Mfg. No. | Description |
|-----------|----------|-------------|
| HN140 | TCX-21E | English |
| HN163 | TCX-21F | French |

TIME CLOCK ACCESSORIES

- Card rack is adjusted for standard 8 1/4" long cards
- Fits 25 standard time cards
- Rack is adjustable to accommodate cards of different widths

| Model No. | Description |
|-----------|-----------------------------------|
| HA004 | Card Rack |
| HA001 | 1,000 Time Cards, English |
| HA020 | 1,000 Time Cards, French |
| HN141 | Replacement Ribbon for Time Clock |



HA004

WALL CLOCKS

BATTERY OPERATED

- 12" diameter round office wall clock
- 12/24 hour
- Black chrome

Model No. HT072



ELECTRIC CLOCK

- 12" diameter round office wall clock
- 12/24 hour
- Black

Model No. HX019



TIME CLOCK

- Manual or automatic print
- Selectable imprints: year (4 digit), month, date and time or notation
- Selectable print format: year, month and date or Julian date; day or date; AM/PM or 0-23 hours; regular minutes or 100th of an hour
- Right or left side printing
- Desk or wall mount
- Fast, easy set-up of date, time, print format, etc.
- Easy-to-replace ribbon cartridge
- Easy-to-read LCD display
- Automatic adjustment for Daylight Savings Time
- Calendar automatically adjusts for short months and leap year
- Quartz clock accuracy
- Built-in lithium battery backup protects clock and program data in the event of power failure
- Fast, quiet dot matrix printing
- Selectable notations: RCV'D, SENT, FAX'D, VOID, PAID, CFM'D APR'D, CMPL'D, ORIGN, FILE



SPECIFICATIONS:

Power Supply: 120 AC $\pm 10\%$, 60 Hz
 Power Consumption: Normal 3W, Max. 6W
 Ambient Temperature: 14°F-113°F (-10°C-45°C)
 Humidity: 10% - 90% (no condensation)
 Dimensions: 5.5" W x 6.5" D x 6" H
 150 x 140 x 165 (mm)
 Weight: 4.2 lbs. (1.8 kg)

| Model No. | Mfg. No. | Description |
|-----------|----------|-------------|
| HN164 | PIX-21E | English |
| HN165 | PIX-21F | French |

TAKE-A-NUMBER SYSTEM

- Provides fair, organized, efficient customer service
- Enhances the customer's perception of quality
- Assures customers their turn for service
- Used in supermarkets, retail stores, specialty shops, post offices, tourist information centres, travel bureaus, banks, hair salons, insurance companies, trade fairs, ticket sales offices, embassies, restaurants, and utility companies
- Kit includes: 2-number segment display
 Power supply (12 V AC)
 6 rolls of white tickets (4000/roll)
 Dispenser (D900)
 Counter Stand with sign
 Push buttons and wires (1+, 1-)

Model No. OG421



OFFICE STORAGE PRODUCTS

RECORD STORAGE UNITS

These storage units will aid in records management by providing an organized solution to high density archive storage. A rigid, boltless connection between beams and posts (see inset) provides structural integrity while allowing for easy assembly without special tools - all you need is a rubber mallet. Order complete units - including shelving, deck and boxes - or shelving with deck only. Add-on units utilize a common T-post between units to save assembly time and cost. Standard unit width: 69". Shelf capacity: 525 lbs. each



For extra boxes
Model No.
OA075

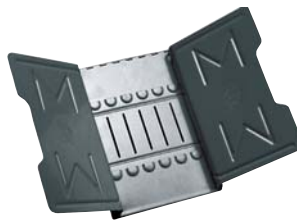


| No. of Shelves | Unit Type | Size D" x H" | No. of Boxes | Model No. | Wt. lbs. |
|---|-----------|--------------|--------------|-----------|----------|
| COMPLETE UNITS (INCLUDES SHELVING, DECK & BOXES) | | | | | |
| 4 | Starter | 15 x 84 | 40 | RK156 | 167 |
| 4 | Add-on | 15 x 84 | 40 | RK157 | 166 |
| 4 | Starter | 30 x 84 | 80 | RK158 | 281 |
| 4 | Add-on | 30 x 84 | 80 | RK159 | 279 |
| 5 | Starter | 15 x 108 | 50 | RK160 | 209 |
| 5 | Add-on | 15 x 108 | 50 | RK161 | 207 |
| 5 | Starter | 30 x 108 | 100 | RK162 | 351 |
| 5 | Add-on | 30 x 108 | 100 | RK163 | 349 |
| SHELVING & DECK ONLY (NO BOXES) | | | | | |
| 4 | Starter | 15 x 84 | 0 | RK148 | 135 |
| 4 | Add-on | 15 x 84 | 0 | RK149 | 134 |
| 4 | Starter | 30 x 84 | 0 | RK150 | 217 |
| 4 | Add-on | 30 x 84 | 0 | RK151 | 215 |
| 5 | Starter | 15 x 108 | 0 | RK152 | 169 |
| 5 | Add-on | 15 x 108 | 0 | RK153 | 167 |
| 5 | Starter | 30 x 108 | 0 | RK154 | 271 |
| 5 | Add-on | 30 x 108 | 0 | RK155 | 269 |
| Model No. OA075 Archive Box (12" L x 15" D x 9 1/2" H) | | | | | 0.08 |

REFERENCE RACKS

STARTER SETS

Hinged rack collapses for transport. Base is positioned at a 45° angle for easy viewing. Ring or post sections are removable and units can be expanded to any length by adding extensions. Available in black or grey.



STARTER KIT

Complete with one 6" capacity rack, two support wings and six 1" ring sections OD499.

| Model No. | Description | Wt. lbs. |
|-----------|--------------------|----------|
| OD490 | Starter Kit, Black | 6 |
| OD491 | Starter Kit, Grey | 6 |

REFERENCE RACK INDEXES

Available in pressboard or polyethylene, these 11" x 8 1/2" sheets allow indexing of the catalogue racks. Comes in sets of 24 alphabetical or sets of 6 with a blank window for inserting card tabs.

| Model No. | Description | Wt. Lbs. |
|-----------|-------------------------------|----------|
| OC372 | Polyethylene Alphabetical Set | 1.5 |
| OC374 | Polyethylene Insertable Set | 1.5 |



STOREX STORAGE FILE DRAWER SYSTEM

- Durable plastic construction with plastic rollers on drawers for smooth operation
- Convenient built-in label holder
- Accommodates file folders or hanging files
- Stackable up to 10 units high with secure interlocking system
- Ideal for dust and mildew control in schools, hospitals and other public buildings



| Model No. | Record Size | Dimensions | | | | | Colour |
|-----------|-------------|------------|---|--------|---|--------|----------------------|
| | | L" | x | W" | x | H" | |
| OE785 | Letter | 24 1/4 | x | 15 | x | 11 1/2 | Grey/Granite (front) |
| OE786 | Letter | 24 1/4 | x | 15 | x | 11 1/2 | Black/Grey (front) |
| OE812 | Legal | 24 3/8 | x | 17 7/8 | x | 11 1/4 | Grey/Granite (front) |

BANKERS BOX® ENVIRO STOR™ ATTACHED LID BOX FILE

Letter/Legal.
Overall dimensions: 12" x 10" x 15".
Model No. OA075



ECONO/STOR® BOXES

The perfect choice for economical storage of semi-active or dead records. White corrugated fibreboard construction features smooth rolled edges that provides a clean finish and avoids paper cuts.



| Model No. | Record Size | Inside Drawer Dimensions | | | | | Qty/ Carton |
|-----------|-----------------|--------------------------|---|----|---|----|-------------|
| | | W" | x | D" | x | H" | |
| OA082 | Letter | 12 | x | 24 | x | 10 | 12 |
| OA079 | Legal | 15 | x | 24 | x | 10 | 12 |
| OA081 | Letter or Legal | 12 | x | 15 | x | 10 | 25 |

RING OR POST SECTIONS

| Model No. | Description |
|-----------|----------------------------|
| OD499 | 3 Ring Section 1" capacity |
| OD500 | 3 Ring Section 2" capacity |
| OD501 | 3 Post Section 1" capacity |
| OD502 | 3 Post Section 2" capacity |



DELUXE CATALOG RACKS

Base is angled at 30° for counter top use. A vertical barrier provides privacy. 24" filling capacity.

Model No. OD506 Black
Model No. OD507 Grey



REFERENCE RACK INCLUDING WINGS

(RING OR POST SECTIONS NOT INCLUDED)

| Model No. | Description | Wt. lbs. |
|------------------------|---|----------|
| OD493 | Rack Section, 6" Filling Capacity, Black | 4 |
| OD494 | Rack Section, 12" Filling Capacity, Black | 5 |
| OD496 | Rack Section, 12" Filling Capacity, Grey | 5 |
| EXTENSION RACKS | | |
| OD504 | Extension, 6" Filling Capacity, Grey | - |

LABELLING SYSTEMS

LABEL HOLDERS

Clearly identify your shelf/bin contents with the efficient and time-saving Aigner holders. Versatile, highly protective, easy to read, and even custom designed with a special matte 4finish for fool-proof bar code applications. Ideal for all types of racking, shelving and bin/drawer storage systems. Available in 3 different types:

Sold in packages of 12

HOL-DEX®

- Can be custom cut to your specific size specifications
- Colour: Clear



| Model No. | Dim. W" x L" |
|------------------------|--------------|
| Self-Adhesive | |
| OA340 | 1/2 x 6 |
| OA339 | 3/4 x 6 |
| OA341 | 1 x 6 |
| OA338 | 2 x 6 |
| Magnetic | |
| RG650 | 1/2 x 6 |
| OA389 | 3/4 x 6 |
| OA336 | 1 x 6 |
| RG655 | 2 x 6 |
| Hook & Loop | |
| RG660 | 1 x 6 |
| RG665 | 2 x 6 |

SUPERSCAN™

- Available in 4 extra large sizes for pallet racking installation
- Clear plastic matte finish assures precise bar code reading everytime
- Inserts are laser ink jet printer compatible for easy labelling

SUPERSCAN™ (Clear only)

| Model No. | Dim. W" x L" |
|----------------------|--------------|
| Self-Adhesive | |
| RG670 | 3 x 5 |
| RG671 | 4 x 6 |
| RG681 | 5 x 7 |
| RG682 | 8 1/2 x 11 |



| | |
|-----------------|------------|
| Magnetic | |
| RG672 | 3 x 5 |
| RG673 | 4 x 6 |
| RG683 | 5 x 7 |
| RG684 | 8 1/2 x 11 |

WIRE-RAC™

- New snap on holders easily and quickly identify stored contents
- Clear, flexible plastic sleeves fit new or existing wire shelving with 1 1/4" facing; paper inserts included
- Available in 4 different lengths: 3", 6" 12" and 24"

| Model No. | Dim. W" x L" |
|-----------|--------------|
| RH683 | 1 5/16 x 3 |
| RH684 | 1 5/16 x 6 |
| RH685 | 1 5/16 x 12 |
| RH686 | 1 5/16 x 24 |



WAREHOUSE AISLE SIGN KIT

- Create your own customized warehouse aisle signs
- Built-in flexible hinge prevents breakage
- Signs are held securely until removed and replaced
- Included: 10 hinged sign holders that snap into pallet rack assembly holes and 12 yellow index cards together with printing instructions

Model No. OE798



WRITE-ON MAGNETIC TAGS

A fast, simple and inexpensive means of labelling high volume applications, primary uses in warehouses and other storage areas. The newly formulated write-on/wet erase tags come with an aggressive magnetic backing. The vinyl top coating makes marking with any standard wet erase marker a snap. The special wet erase feature will keep tags clear and clean for extended periods. Mark with a standard wet erase marker, erase with a damp cloth and remark. Standard product thickness is 1/32".

| Model No. | Dimensions | Qty /box |
|-----------|------------|----------|
| RH698 | 1" W | 50' Roll |
| RH699 | 2" W | 50' Roll |
| RH700 | 3" W | 50' Roll |



BIN-BUDDY'S™ LABEL HOLDERS

- Self-adhesive back will adhere to any space age plastic or metal container
- Offers a quick and easy means of changing labels every time the contents of a storage container changes
- Comes with a bar code compatible window that protects the label from dirt and moisture
- Inserts provided are laser/inkjet compatible, pre-perforated with simple printing instructions
- 25/pkg



Model No. Dimensions

| | |
|-------|---------|
| OF212 | 1" x 3" |
| OF213 | 2" x 4" |
| OF210 | 3" x 5" |
| OF211 | 4" x 6" |

SLIP STRIP™ LABEL HOLDING SYSTEM

- Excellent for displaying bar codes, messages, prices or other information on pallet racking and shelving
- Self-adhesive label/document holder system allows you to change labels without messy adhesive build-up
- 6/pkg

| Model No. | Description | Dimensions W" x L" |
|-----------|---------------|--------------------|
| OE801 | Self-adhesive | 3/4 x 36 |
| OE802 | Self-adhesive | 1 x 36 |
| OE803 | Self-adhesive | 1 1/4 x 48 |
| OE804 | Self-adhesive | 2 x 48 |



MAGNETIC CARD HOLDERS

Fast, simple and versatile means of labelling. Insertable magnetic C channel design allows for labels to be changed simply by re-marking the paper insert or re-positioning the magnet. Great for metal racks, shelves, bins, drawers and more. Black colour, custom cut sizes available on special order. Inserts included.



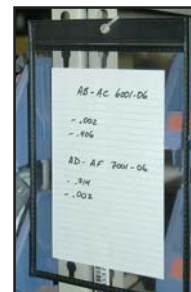
| Model No. | Dimensions W" x L" | Qty /Box |
|-----------|--------------------|----------|
| OE250 | 1 x 3 | 25 |
| OE251 | 1 x 4 | 25 |
| OE252 | 1 x 6 | 25 |
| OE253 | 1 x 8 | 25 |
| OE254 | 2 x 3 | 25 |
| OE255 | 2 x 4 | 25 |
| OE256 | 2 x 6 | 25 |
| OE257 | 2 x 8 | 25 |
| OE258 | 3 x 4 | 25 |
| OE259 | 3 x 6 | 25 |
| OE260 | 3 x 8 | 25 |

PREMIUM JOB TICKET HOLDERS

- Protect work orders, production schedules, inventory cards and other important documents from excessive handling and wear
- Sewn edges are reinforced with heavy-duty vinyl and a brass eyelet is centered for hanging
- Clear 8 mil. PVC for easy visibility

Sold in box of 25

| Model No. | Dimensions W" x L" |
|-----------|--------------------|
| PC529 | 9 x 6 |
| PC530 | 12 x 9 |



OPEN-EDGE™ LABEL HOLDERS

- The "top loading" feature is ideal for organizing any storage area
- Aggressive adhesive system assures the label holder will not fall off any clean dry surface
- Made from clear, durable, heavy-duty PVC that is bar code compatible
- White inserts included • 100/pkg

| Model No. | Dimensions |
|-----------|------------|
| OG358 | 1/2" x 12" |
| OG359 | 1" x 12" |
| OG360 | 2" x 12" |
| OG361 | 3" x 5" |



AUDIO-VISUAL PRODUCTS

OVERHEAD PROJECTION CARTS & TABLES

BRETTFORD®

OVERHEAD PROJECTOR TABLES

Adapts to stand up or sit down presentations. Work surface adjusts from 27" to 41" H and projector well adjusts from 5" to 11". Convenient storage space below projector well holds papers and viewprints. Model **PA715** includes a two outlet electrical assembly. Overall dimensions: 37" W x 22 1/2" D x 27" - 41" H. Projector Well: 17 1/2" W x 20 1/2" D. Includes 4" hard rubber casters, two with locking brakes.

| Model No. | Description | Wt. lbs. |
|-----------|-----------------------------|----------|
| PA714 | Table | 64 |
| PA715 | Table w/Electrical Assembly | 67 |

OVERHEAD PROJECTOR CARTS

Durable steel construction and adjustable height design. Includes 4" hard rubber casters, two with locking brakes. Electrical models include a two-outlet C-UL listed electrical unit with a 20' extension cord and cord winder. Available in 29" desk height for sit down presentation or 39" H for stand up presentation. Projector well adjusts up or down 8 3/4" in four increments. Fold down drop leaves on each side of projector well. Putty beige finish. Dimensions: 22 1/2" W x 19 3/4" D x 29" - 39" H.

| Model No. | Description | Wt. lbs. |
|-----------|---|----------|
| PA716 | Overhead Projector Cart 29"H | 31 |
| PA717 | Overhead Projector Cart 39"H | 34 |
| PA718 | Overhead Projector Cart w/electrical 29"H | 33 |
| PA719 | Overhead Projector Cart w/electrical 39"H | 37 |

Electrical models include a 2 outlet C-UL listed electrical unit with a 20' extension cord and cord winder.

PROJECTION SCREENS

WALL & TRIPOD SCREENS

Durable steel slat runs along the base of the screens. Includes steel case with painted end caps. Screen colour - matte white. Tripod screens feature steel magnetic legs.

| Model No. | Dimensions" | Wt. lbs. |
|-----------|----------------|----------|
| OA053 | Wall 60 x 60 | 13 |
| OA529 | Wall 70 x 70 | 15 |
| OA532 | Tripod 60 x 60 | 23 |
| OA531 | Tripod 70 x 70 | 26 |



BRETTFORD®

AUDIO-VISUAL CARTS

ADJUSTABLE CARTS

All welded steel carts with 4" casters (2 lock). Can adjust to five heights from 26" to 42". Overall dimensions: 24" W x 18" D x 26 - 42" H. Recommended for use with 20" diagonal monitors. Available with lockable lower storage cabinet. Cabinet dimensions (interior): 23 1/2" W x 17 1/2" D x 15 1/2" H. Units available with two-outlet electrical assembly. Colour: Black.

| Model No. | Description | Wt. lbs. |
|-----------|---|----------|
| OA530 | Adjustable cart | 42 |
| OA052 | Adjustable cart w/electrical outlet | 44 |
| PA744 | Adjustable cabinet cart | 55 |
| PA730 | Adjustable cabinet cart w/electrical outlet | 57 |



OA530

WIDE BODY CARTS

Pyramid design for maximum support. Solid steel construction with black powder finish. 4" casters (2 lock) and spacious. Electrical unit includes two-outlet electrical unit with a 20' extension cord and cord winder.

| Model No. | Description | Wt. lbs. |
|-----------|-----------------------------------|----------|
| OA533 | 32" x 27 1/2" x 48" | 63 |
| OA049 | same as OA533 - c/w elec. outlets | 65 |
| OA045 | 32" x 27 1/2" x 44" | 59 |
| OA051 | same as OA045 - c/w elec. outlets | 61 |



OA533



PA744

BRETTFORD®

PLATFORM STYLE TELEVISION MOUNT

For small to mid-size monitors. Offers 10° tilt and a 360° swivel capability. Anti-theft device secures monitor to platform. Optional VCR bracket features anti-theft device and 180° swivel independent of the mount. Used for 19" - 20" or 25" - 27" monitors.

| Model No. | Dimensions |
|-----------|----------------|
| OB123 | 19-20" monitor |
| OB124 | 25-27" monitor |
| OA044 | VCR bracket |



BRETTFORD®

TELEVISION MOUNT

- A 0-30° forward tilt and 360° swivel allows the monitor to be set in any position
- Wall yoke TV mount will fit most 19-35" diagonal monitors
- Ceiling yoke TV mount will fit most 19-40" diagonal monitors
- Mounts are UL and C-UL Listed for safety
- All mounting hardware included with wall mount
- Mounting pipes and hardware are sold separately and are required for installation with ceiling mount
- Optional DVD/VCR bracket available



OG425

BRETTFORD®

| Model No. | Dimensions |
|-----------|----------------------|
| OG422 | 19-20" Wall Mount |
| OG423 | 25-27" Wall Mount |
| OG424 | 19-20" Ceiling Mount |
| OG425 | 25-27" Ceiling Mount |
| OG426 | DVD/VCR Bracket |
| OA050 | Ceiling Flange |
| OA054 | 4" Black Pipe |
| OA048 | 10" Black Pipe |
| OA043 | 18" Black Pipe |



OG422 with
DVD/VCR bracket

LCD PROJECTOR MOUNT

- Mounts to the ceiling
- Easily adjustable to fit most bottom-mounted LCD projectors up to 26 lbs.
- Ball and socket joint provides flexible tilting and 360° rotation of the projector
- Mount hangs down 6" from the ceiling
- Includes a "Quick Release" knob that separates the projector from the mounting plate
- Includes four sets of mounting screws and spacers to fit most projectors
- Available with a 23" to 43" height adjustable arm or for ceiling installations with up to a 90° angle
- Ceiling mounting hardware not included

Model No. OG427



BRETTFORD®

MEDIA MASTER™ AUDIO-VISUAL CART

- Aluminum uprights, locking cabinet, UL rated 3-outlet power strip w/15' cord and locking swivel casters
- Capacity: 150 lbs.

| Model No. | Overall Dimensions | | | | |
|-----------|--------------------|---|--------|---|-----|
| | W" | x | L" | x | H" |
| MH303 | 18 3/4 | x | 33 3/4 | x | 33 |
| MH304 | 18 3/4 | x | 32 3/4 | x | 42" |



Rubbermaid
Commercial Products

PRESENTATION BOARDS & ACCESSORIES

CORKBOARDS

- These natural cork boards are ideal for the office or warehouse
- Natural aluminum frame; square corners
- Coloured corkboards, black plastic mouldings, square corner (not shown)



OA030

CORK

| Model No. | Dimensions" | Wt. lbs. |
|-----------|-------------|----------|
| OA030 | 18 x 24 | 3 |
| OA025 | 24 x 36 | 6 |
| OA026 | 36 x 48 | 12 |
| OA028 | 48 x 72 | 23 |
| OA022 | 48 x 96 | 30 |

GREEN CORK

| | | |
|-------|---------|----|
| OD792 | 18 x 24 | 3 |
| OD793 | 24 x 36 | 6 |
| OD794 | 36 x 48 | 12 |

CHALKBOARDS

Smooth surface guarantees clear, legible writing and easy erasing. Natural aluminum frame; square corners. Green writing surface.



OA478

| Model No. | Dimensions" | Wt. lbs. |
|-----------|-------------|----------|
| OA478 | 18 x 24 | 3.5 |
| OA479 | 24 x 36 | 7.0 |
| OA031 | 36 x 48 | 12.5 |
| OA477 | 48 x 72 | 23 |
| OA480 | 48 x 96 | 30 |

ACCESSORIES

| Model No. | Description |
|-----------|-----------------------|
| OC381 | Chalk, White (12/bx) |
| OC383 | Chalk Eraser |
| OC384 | Aluminum Chalk Holder |

LETTERS, NUMBERS & SYMBOLS

FOR MAGNETIC BOARD

- Pack of 128 white raised lettering on matte black background
- Moulded grooves on the back of each magnetic letter fit over the alignment ridges on the board, keeping the letters straight and even

Model No. OTJ490 - 3/4"

Model No. OTJ489 - 1"



FOR DIRECTORY BOARDS

- White plastic letters, numbers, symbols, and punctuation marks
- Roman style
- 435 pieces

Model No. OG402 - 1"

WHITEBOARDS

Clean, colourful marker boards get attention fast. Non-magnetic, white writing surface wipes clean with cloth, felt brush or tissue; dustless, effortless erasing. Natural aluminum frame; square corners.



| Model No. | Dimensions" | Wt. lbs. |
|-----------|-------------|----------|
| OA029 | 18 x 24 | 3.5 |
| OA021 | 24 x 36 | 7.0 |
| OA027 | 36 x 48 | 12.5 |
| OA023 | 48 x 72 | 23 |
| OA024 | 48 x 96 | 30 |

WHITEBOARD MARKERS

Expo® dry erase markers allow for vivid and expressive communication on practically any whiteboard. Marks with a smooth, consistent line that retains its colour and erases easily with a dry cloth or eraser. Available in eight individual colours or a four and eight pen set.

| Model No. | Description |
|-----------|---|
| OD172 | Red |
| OD173 | Blue |
| OD175 | Green |
| OD177 | Black |
| OD178 | Set of four (Red, Blue, Green, Black) |
| OD179 | Set of eight (Red, Blue, Green, Black, Yellow, Orange, Brown, Purple) |



MAGNETIC BOARD

- White painted steel
- Aluminum frame

| Model No. | Size" |
|-----------|---------|
| OG086 | 18 x 24 |
| OG087 | 24 x 36 |
| OG088 | 36 x 48 |
| OG089 | 48 x 72 |



COVERED DIRECTORY BOARD

Locking glass door on hinges provides a professional appearance, deters unauthorized access to messages. Felt grooved black surface. 1/4" plexiglass in aluminum frame.

| Model No. | Dimensions H" x W" | Wt. lbs. |
|-----------|--------------------|----------|
| OA471 | 36 x 24 | 34 |



CORKBOARD ACCESSORIES

PUSH PINS

Plastic head, assorted colours. 100/pkg.

Model No. OC387

THUMB TACKS

3/8" steel point. Available in assorted PVC coated colours or brass finish. 100/pkg.

| Model No. | Description |
|-----------|---|
| OC388 | Thumb tacks, PVC coated, assorted colours |
| OC389 | Thumb tacks, brass finish |



KEY CONTROL SYSTEMS

DESK DRAWER KEY TRAY

TWO TAG SYSTEM

Even a drawer becomes a key control system! This lightweight, portable steel key tray is capable of holding 49 keys and can be carried from storage area to the point of usage. Fits in desk drawers, safes, file cabinets, lockers or chests. Includes seven panels with seven hooks and all the components for the two tag system. Key tags and envelopes included are same amount as key capacity. Colour: Soft tan.



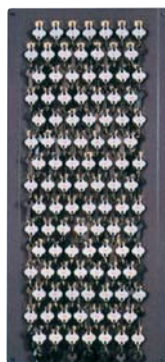
| Model No. | Dimensions | | | | | Key Capacity | Wt. lbs. |
|-----------|------------|---|----|---|----|--------------|----------|
| | H" | x | W" | x | D" | | |
| OA596 | 4 3/4 | x | 12 | x | 8 | 49 | 12 |

WALL KEY BOARDS

These heavy gauge steel key boards may be mounted on a wall when the added protection of a locked cabinet is not required. These wall boards are supplied with 55 or 105 red, vulcanized fibre octagonal key tags that NEVER leave the system, and 55 or 105 white, vulcanized shamrock key tags that hold duplicate keys for loan. Key gathering envelopes and key receipt tags are provided with this system. This board is furnished with the 3-way cross-indexing system that consists of hook numerical index, alphabetical by lock location index and key numerical index. A key loan register is standard equipment which allows the user to record what keys are loaned and to whom. Colour: Soft tan.



OD944



OD945

| Model No. | Dimensions | | | | | Key Capacity | Wt. lbs. |
|-----------|------------|---|----|---|-----|--------------|----------|
| | H" | x | W" | x | D" | | |
| OD944 | 18 | x | 14 | x | 3/4 | 55 | 6 |
| OD945 | 33 | x | 14 | x | 3/4 | 105 | 10 |

MEDIUM CAPACITY KEY CABINETS

- Wall-mounted cabinet
- Holds up to four 100-unit key panels
- Provides maximum security when two locks that are keyed differently are added
- Made from 18-gauge steel
- Dimensions: 13" W x 7 7/8" D x 27" H
- Grey enamel finish

| Model No. | Description |
|-----------|------------------|
| OG419 | 250-Key Capacity |
| OG420 | 450-Key Capacity |



FILE DRAWER KEY RACK

TWO TAG SYSTEM

This heavy-duty metal rack is designed for use in office file cabinets. There are two adjustable clamps on the back of the steel rack that permit the unit to be attached to any standard file drawer. Includes all the components for the two tag system. Key tags and envelopes included are same amount as key capacity. Colour: Soft tan

| Model No. | Dimensions | | | Key Capacity | Wt. lbs. |
|-----------|------------|---|----------|--------------|----------|
| | H" | x | W" | | |
| OA595 | 10 | x | 11 11/16 | 21 | 3 |



KEY CABINETS

- Organize and control your office keys with wall mounted locking cabinets
- One cam lock installed with two keys for model OE818 and OE820
- Two cam locks and four keys for model OE821
- Supplied with key tags, key rims and mounting screws, except for model OE821 (tags sold separately)
- Replacement clear vinyl tags model OE822 come with white card inserts, and sturdy 1" key rings, packaged 100/box
- Quality steel construction
- Key rings, packaged 100/box
- Replacement white plastic key tags OE823, packaged 25/box



| Model No. | Description | Dimensions | | | | |
|-----------|------------------------|------------|---|-------|---|--------|
| | | W" | x | D" | x | H |
| OE818 | 21 key cabinet | 8 1/8 | x | 1 1/4 | x | 10 1/8 |
| OE820 | 75 key cabinet | 11 3/8 | x | 3 | x | 11 3/4 |
| OE821 | 250 key cabinet | 15 1/8 | x | 5 1/2 | x | 35 1/4 |
| OE822 | Key tags (clear vinyl) | 1 | x | 1 7/8 | | |
| OE823 | Key tags (plastic) | 1 1/8 | x | 1 1/3 | | |

DOUBLE TAG SYSTEMS

How the two-tag system works! Features a Master Key that is never loaned. To insure proper security and to avoid key loss, the Master Key is used only to make duplicate keys. The Master Key is fastened to a red key tag and filed permanently on a labeled hook. Duplicate keys are fastened to white tags on the same hook. Each key is indexed in three ways: by hook number, alphabetically by what the key opens, and numerically. When a key leaves the system, a receipt tag is filled out and hung with the master key until the loaner is returned. All loans are recorded in the key loan register. Key tags and envelopes included are same amount as key capacity. Colour: Soft tan.



| Model No. | Dimensions | | | | | Key Capacity | Wt. lbs. |
|-----------|------------|---|----|---|-------|--------------|----------|
| | H" | x | W" | x | D" | | |
| OA597 | 14 1/8 | x | 9 | x | 5 1/8 | 30 | 9 |
| OA589 | 14 1/8 | x | 9 | x | 5 1/8 | 40 | 10 |
| OA590 | 14 1/8 | x | 9 | x | 5 1/8 | 60 | 11 |
| OA592 | 19 7/8 | x | 15 | x | 5 3/8 | 80 | 17 |
| OA593 | 19 7/8 | x | 15 | x | 5 3/8 | 120 | 18 |
| OA594 | 19 7/8 | x | 15 | x | 5 3/8 | 230 | 23 |

EXTRA KEY TAGS FOR TWO-TAG SYSTEMS

The two-tag system includes...

- Permanent "non-loan" red key tags
- White shamrock key tags
- Key collection envelopes
- Key receipt tags
- Hook label sheets
- Cross reference index binder



OCTAGONAL PERMANENT KEY TAGS RED FIBRE

| Model No. | Numbers |
|-----------|---------|
| OA091 | 1-100 |
| OA587 | 101-200 |
| OA588 | 201-300 |

SHAMROCK DUPLICATE KEY TAGS WHITE FIBRE

| Model No. | Numbers |
|-----------|---------|
| OA090 | 1-100 |
| OA598 | 101-200 |
| OA591 | 201-300 |

OTHER ACCESSORIES

| Model No. | Description |
|-----------|-------------------------------------|
| OD946 | Key collection envelopes 100/pkg. |
| OD947 | Key receipt tags 250/pkg. |
| OD948 | Hook label sheets 100 numbers/sheet |
| OD949 | Three way cross reference binder |

WATER COOLERS

PLASTIC INDUSTRIAL BEVERAGE COOLERS

Built to withstand the abuse of the roughest work area or job site.

- Recessed spigot with large button for easy access, even with gloves
- Red and yellow high visibility safety colours
- Replaceable parts
- 5 Year warranty

Bracket for cup dispenser is included on 3 gallon and up coolers

Cup dispensers fit all 3-gallon and up coolers. Available in metal or plastic.



| Model No. | Description | Wt. lbs. |
|-----------|---|----------|
| OZ001 | 2-Gallon Cooler | 4.5 |
| OZ002 | 3-Gallon Cooler | 6.6 |
| OC404 | 5-Gallon Cooler | 7.6 |
| OC405 | 10-Gallon Cooler | 11.6 |
| OC529 | Metal cup dispenser - 4 oz. cone cups | |
| OC530 | Metal cup dispenser - 7 oz. cone cups | |
| OC531 | Plastic cup dispenser - 4 - 4 1/2 oz. cone cups | |
| Model No. | Description | Qty/pkg. |
| OD034 | 4 oz. conical paper cups | 200 |

igloo

BARRIER FREE WHEELCHAIR COOLERS

- Designed specifically for easy access
- Wheelchairs fit under edge of water basin for comfort and convenience
- Instructions and wall mounting brackets included
- Available with filter model OE790



| Model No. | Mfg. No. | Bubbler Valve Type | GPH Cap. | Dimensions W" x D" x H" |
|-----------|----------|----------------------------|----------|----------------------------|
| OA059 | P8AM | 3-Electric Push Bars | 7.8 | 17 1/2 x 18 1/2 x 22 11/32 |
| OA057 | PLF8SKPE | Dial | 8 | 18 x 18 1/2 x 26 1/2 |
| OE790 | PF8AM | Electric push bar w/filter | 8 | 17 1/2 x 18 1/2 x 22 11/32 |

Drinking water temperature 50°F.

INDUSTRIAL WATER COOLERS

- Heavy-duty blow moulded resin resists chips and dents in the toughest work area or job site
- Injection grade insulated liner material keeps your water or beverage cold
- Leak-resistant screw on lid
- Drip-resistant spigot
- Sturdy moulded-in handles on the 10 gallon
- Universal cup dispenser is available for 3 gallons and up, holds 200 cups
- Water cooler mounting bracket for the 5-gallon cooler, durable and weather resistant

Rubbermaid
Home Products



| Model No. | Description | Wt. lbs. |
|-----------|-------------------------|----------|
| NI653 | 3 Gallons | 5.4 |
| NI654 | 5 Gallons | 7.5 |
| NI655 | 5 Gallons/w Dispenser | 7.5 |
| NI656 | 10 Gallons | 10.9 |
| NI657 | Universal Cup Dispenser | 4.9 |
| NI658 | Mounting Bracket | 7.4 |

FREE STANDING & AGAINST-A-WALL

ANSI/NSF 61
OASIS

OASIS
The World's Most Versatile Water Cooler

- FS & P series** - Free standing units for heavy-duty performance.
CP series - Compact, only occupy one square foot of space. Used in areas where space is limited.
FA Series - Plumbing connections completely concealed within cabinet permitting flush AGAINST-A-WALL installation saving 30% in floor space

- Constructed of 18-gauge steel cabinet and 16-gauge steel base
- Standard colour: Sandstone finish
- Also available with filter



| Model No. | Mfg. No. | Water Cooler Type | GPH Capacity | Dimensions W" x D" x H" | Wt. lbs. |
|--|-----------|---------------------------|--------------|-------------------------|----------|
| FREE STANDING FS & P SERIES | | | | | |
| OA056 | P13P | Heavy-duty | 13.5 | 15 x 15 x 43 3/4 | 80 |
| OA538 | PLF13PFP | Heavy-duty c/w foot pedal | 13.5 | 15 x 15 x 43 3/4 | 80 |
| OA537 | PLF20FSFP | Heavy-duty c/w foot pedal | 20 | 17 x 17 x 43 7/8 | 96 |

COMPACT CP SERIES

| | | | | | |
|-------|--------|---------------------|----|------------------|----|
| OA063 | P3CP | Compact | 3 | 12 x 12 x 43 3/4 | 62 |
| OA064 | P5CP | Compact | 5 | 12 x 12 x 43 3/4 | 70 |
| OA548 | P10CP | Compact | 10 | 12 x 12 x 43 3/4 | 73 |
| OE793 | PF3CP | Compact with filter | 3 | 12 x 12 x 43 3/4 | 68 |
| OE795 | PF10CP | Compact with filter | 10 | 12 x 12 x 43 3/4 | 73 |

AGAINST-A-WALL FA SERIES

| | | | | | |
|-------|-----------|-------------------------------|----|------------------|----|
| OA550 | P14FA | Against-A-Wall | 14 | 17 x 17 x 43 7/8 | 92 |
| OA547 | PLF14FAFP | Against-A-Wall c/w foot pedal | 14 | 17 x 17 x 43 7/8 | 92 |
| OE797 | PF14FA | Against-A-Wall w/filter | 14 | 17 x 18 x 43 7/8 | 95 |

Drinking water temperature 50°F.

DRINKING WATER FILTERS FOR OASIS® COOLERS

- Pre-coat type filters remove dirt, cloudiness, particles, odours and taste
- Model OD647 takes an 18 1/2" vertical space
- Model OD648 takes an 14 1/8" vertical space
- Model OD649 takes an 18 1/2" vertical space and has a special water stabilizer in the built-in feeder to reduce the formation of lime scale in equipment where a low water flow rate is used



All filters work with any Oasis® water cooler and come complete with a head assembly with an integral shutoff valve, an adjustable mounting bracket and a replaceable quick change cartridge.

| Model No. | Description | Wt. lbs. | Model No. | Description | Wt. lbs. |
|-----------|----------------------------|----------|-----------|----------------------------|----------|
| OD647 | Filter 18 1/2" vertical | 4 | OD651 | Refill cartridge for OD648 | 2 |
| OD650 | Refill cartridge for OD647 | 2 | OD649 | Filter w/stabilizer | 5 |
| OD648 | Filter 14 1/8" vertical | 4 | OD652 | Refill cartridge for OD649 | 2 |

WALL MOUNTED

- Should be mounted with nozzle 36" from floor
- Two styles are available: standard and compact
- Instructions and wall mounting brackets included

OA061



| Model No. | Mfg. No. | Water Cooler Type | GPH Cap. | Dimensions W" x D" x H" | Wt. lbs. |
|-----------|----------|---------------------|----------|-------------------------|----------|
| OA062 | PLF3CM | Compact wall mount | 2.7 | 17 x 13 1/4 x 19 7/8 | 51 |
| OA060 | PLF5CM | Compact wall mount | 4.7 | 17 x 13 1/4 x 19 7/8 | 52 |
| OA061 | P8M | Standard wall mount | 8 | 17 x 14 x 29 7/8 | 76 |
| OA536 | P14M | Standard wall mount | 14 | 17 x 14 x 29 7/8 | 80 |
| OA541 | P16M | Standard wall mount | 16 | 17 x 14 x 29 7/8 | 80 |

Drinking water temperature 50°F.